

Datasheet for ABIN520637
anti-SYN1 antibody (AA 362-450)



[Go to Product page](#)

2 Images

Overview

Quantity:	100 µg
Target:	SYN1
Binding Specificity:	AA 362-450
Reactivity:	Human
Host:	Mouse
Clonality:	Monoclonal
Conjugate:	This SYN1 antibody is un-conjugated
Application:	Western Blotting (WB), ELISA

Product Details

Purpose:	Mouse monoclonal antibody raised against a partial recombinant SYN1.
Immunogen:	SYN1 (NP_008881, 362 a.a. ~ 450 a.a) partial recombinant protein with GST tag. MW of the GST tag alone is 26 KDa.
Sequence:	EIFGGLDICA VEALHGKDGR DHIIIEVVGSS MPLIGDHQDE DKQLIVELVV NKMAQALPRQ RQRDASPGRG SHGQTPSPGA LPLGRQTSQ
Clone:	3E3
Isotype:	IgG1
Cross-Reactivity:	Human
Characteristics:	Antibody Reactive Against Recombinant Protein.

Target Details

Target:	SYN1
Alternative Name:	SYN1 (SYN1 Products)
Background:	Full Gene Name: synapsin I Synonyms: SYN1a,SYN1b,SYNI
Gene ID:	6853
NCBI Accession:	NM_006950

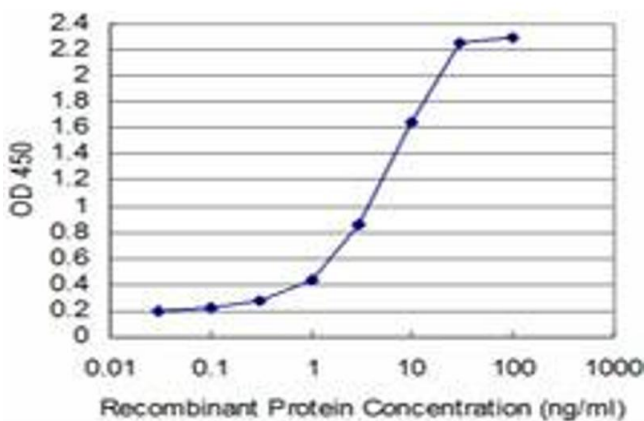
Application Details

Application Notes:	Optimal working dilution should be determined by the investigator.
Restrictions:	For Research Use only

Handling

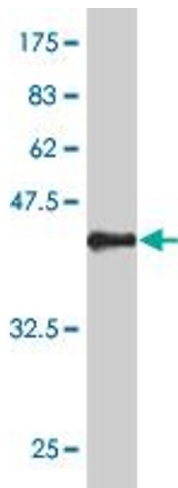
Buffer:	In 1x PBS, pH 7.4
Handling Advice:	Aliquot to avoid repeated freezing and thawing.
Storage:	-20 °C
Storage Comment:	Store at -20°C or lower. Aliquot to avoid repeated freezing and thawing.

Images



ELISA

Image 1. Detection limit for recombinant GST tagged SYN1 is approximately 0.3ng/ml as a capture antibody.



Western Blotting

Image 2. Western Blot detection against Immunogen (35.53 KDa).