



[Go to Product page](#)

Datasheet for ABIN520681

## anti-TAF12 antibody (AA 1-161)

### 2 Images

#### Overview

Quantity:	50 µL
Target:	TAF12
Binding Specificity:	AA 1-161
Reactivity:	Human
Host:	Mouse
Clonality:	Polyclonal
Conjugate:	This TAF12 antibody is un-conjugated
Application:	Western Blotting (WB), Immunofluorescence (IF)

#### Product Details

Purpose:	Mouse polyclonal antibody raised against a full-length human TAF12 protein.
Immunogen:	TAF12 (AAH11986, 1 a.a. ~ 161 a.a) full-length human protein.
Sequence:	MNQFGPSALI NLSNFSSIKP EPASTPPQGS MANSTAVVKI PGTPGAGGRL SPENNQVLTK KKLQDLVREV DPNEQLDEDV EEMLLQIADD FIESVVTAAAC QLARHRKSST LEVKDVQLHL ERQWNMWIPG FGSEEIRPYK KACTTEAHKQ RMALIRKTTK K
Cross-Reactivity:	Human
Characteristics:	Antibody reactive against mammalian transfected lysate.

#### Target Details

Target:	TAF12
---------	-------

## Target Details

Alternative Name:	TAF12 ( <a href="#">TAF12 Products</a> )
Background:	Full Gene Name: TAF12 RNA polymerase II, TATA box binding protein (TBP)-associated factor, 20 kDa Synonyms: TAF2J,TAFII20
Gene ID:	6883

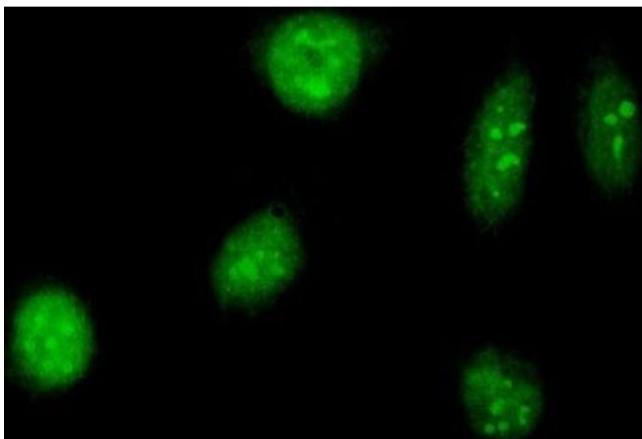
## Application Details

Application Notes:	Optimal working dilution should be determined by the investigator.
Restrictions:	For Research Use only

## Handling

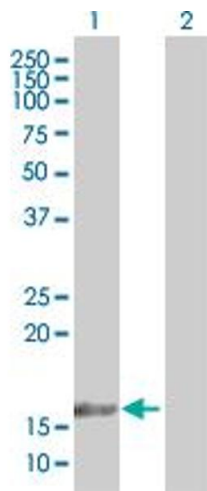
Format:	Liquid
Buffer:	No additive
Preservative:	Without preservative
Handling Advice:	Aliquot to avoid repeated freezing and thawing.
Storage:	-20 °C
Storage Comment:	Store at -20°C or lower. Aliquot to avoid repeated freezing and thawing.

## Images



### Immunofluorescence

**Image 1.** Immunofluorescence of purified MaxPab antibody to TAF12 on HeLa cell. [antibody concentration 10 ug/ml]



### Western Blotting

**Image 2.** Western Blot analysis of TAF12 expression in transfected 293T cell line by TAF12 MaxPab polyclonal antibody.

Lane1:TAF12 transfected lysate(17.82 KDa).

Lane 2:Non-transfected lysate.