



[Go to Product page](#)

Datasheet for ABIN520693  
**anti-TALDO1 antibody (AA 1-337)**

2 Images

Overview

Quantity:	50 µg
Target:	TALDO1
Binding Specificity:	AA 1-337
Reactivity:	Human
Host:	Mouse
Clonality:	Polyclonal
Conjugate:	This TALDO1 antibody is un-conjugated
Application:	Western Blotting (WB)

Product Details

Purpose:	Mouse polyclonal antibody raised against a full-length human TALDO1 protein.
Immunogen:	TALDO1 (NP_006746.1, 1 a.a. ~ 337 a.a) full-length human protein.
Sequence:	MSSSPVKRQR MESALDQLKQ FTTVVADTGD FHAIDEYKPKQ DATTNPSLIL AAAQMPAYQE LVEEAIAYGR KLGGSQEDQI KNAIDKLFVL FGAEILKKIP GRVSTEV DAR LSFDKDAMVA RARRLIELYK EAGISKDRIL IKLSSTWEGI QAGKELEEQH GIHCNMTLLF SFAQAVACAE AGVTLISPFV GRILDWHVAN TDKKSYEPLD DPGVKSVTKI YNYYKKFSYK TIVMGASFRN TGEIKALAGC DFLTISP KLL GELLQDNAKL VPVLSAKAAQ ASDLEKIHLD EKSFRLHNE DQMAVEKLS D GIRKFAADAV KLERMLTERM FNAENGK
Cross-Reactivity:	Human
Characteristics:	Antibody reactive against mammalian transfected lysate.

## Target Details

Target:	TALDO1
Alternative Name:	TALDO1 ( <a href="#">TALDO1 Products</a> )
Background:	Full Gene Name: transaldolase 1 Synonyms: TAL,TAL-H,TALDOR,TALH
Gene ID:	6888
NCBI Accession:	<a href="#">NM_006755</a>

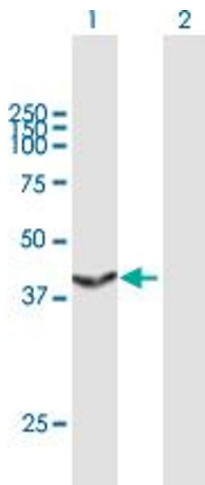
## Application Details

Application Notes:	Optimal working dilution should be determined by the investigator.
Restrictions:	For Research Use only

## Handling

Buffer:	In 1x PBS, pH 7.4
Handling Advice:	Aliquot to avoid repeated freezing and thawing.
Storage:	-20 °C
Storage Comment:	Store at -20°C or lower. Aliquot to avoid repeated freezing and thawing.

## Images

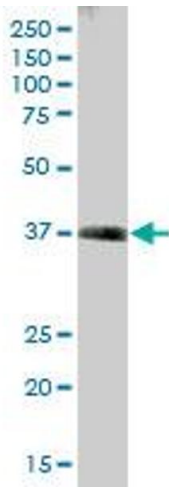


### Western Blotting

**Image 1.** Western Blot analysis of TALDO1 expression in transfected 293T cell line by TALDO1 MaxPab polyclonal antibody.

Lane 1: TALDO1 transfected lysate(37.07 KDa).

Lane 2: Non-transfected lysate.



### Western Blotting

**Image 2.** TALDO1 MaxPab polyclonal antibody. Western Blot analysis of TALDO1 expression in human kidney.