



Datasheet for ABIN520725  
**anti-SERPINA7 antibody (AA 1-415)**



[Go to Product page](#)

1 Image

Overview

Quantity:	100 µg
Target:	SERPINA7
Binding Specificity:	AA 1-415
Reactivity:	Human
Host:	Rabbit
Clonality:	Polyclonal
Conjugate:	This SERPINA7 antibody is un-conjugated
Application:	Western Blotting (WB)

Product Details

Purpose:	Rabbit polyclonal antibody raised against a full-length human SERPINA7 protein.
Immunogen:	SERPINA7 (AAH20747.1, 1 a.a. ~ 415 a.a) full-length human protein.
Sequence:	MSPFLYLVL V LGLHATIHC ASPEGKVTAC HSSQPNATLY KMSSINADFA FNLYRRFTVE TPDKNIFFSP VSISAALVML SFGACCSTQT EIVETLGFNL TDTPMVEIQH GFQHLICSLN FPKKELELQI GNALFIGKHL KPLAKFLNDV KTLYETEVFS TDFSNISAAK QEINSHVEMQ TKGKVVGLIQ DLKPNTIMVL VNYIHFKAQW ANPFDPSKTE DSSSFLIDKT TTVQVPMMHQ MEQYYHLVDM ELNCTVLQMD YSKNALALFV LPKEGQMESV EAAMSSKTLK KWNRLQLKGW VDLFVPKFSI SATYDLGATL LKMGIQHAYS ENADFSGLTE DNGLKLSNAA HKAVLHIGEK GTEAAAVPEV ELSDQPENTF LHPIIQIDRS FMLLILERST RSILFLGKVV NPTEA
Cross-Reactivity:	Human
Characteristics:	Antibody reactive against mammalian transfected lysate.

## Target Details

Target:	SERPINA7
Alternative Name:	SERPINA7 ( <a href="#">SERPINA7 Products</a> )
Background:	Full Gene Name: serpin peptidase inhibitor, clade A (alpha-1 antiproteinase, antitrypsin), member 7 Synonyms: TBG
Gene ID:	6906
Pathways:	<a href="#">Hormone Transport</a>

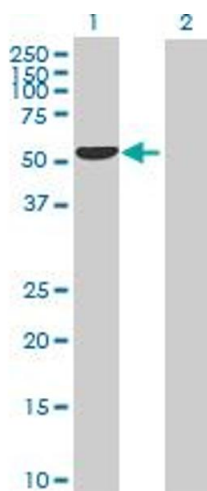
## Application Details

Application Notes:	Optimal working dilution should be determined by the investigator.
Restrictions:	For Research Use only

## Handling

Buffer:	In 1x PBS, pH 7.4
Handling Advice:	Aliquot to avoid repeated freezing and thawing.
Storage:	-20 °C
Storage Comment:	Store at -20°C or lower. Aliquot to avoid repeated freezing and thawing.

## Images



### Western Blotting

**Image 1.** Western Blot analysis of SERPINA7 expression in transfected 293T cell line by SERPINA7 MaxPab polyclonal antibody.

Lane 1: SERPINA7 transfected lysate(46.30 KDa).

Lane 2: Non-transfected lysate.