

Datasheet for ABIN520728  
**anti-TBL1X antibody (AA 478-577)**

## 3 Images

[Go to Product page](#)

## Overview

Quantity:	100 µg
Target:	TBL1X
Binding Specificity:	AA 478-577
Reactivity:	Human
Host:	Mouse
Clonality:	Monoclonal
Conjugate:	This TBL1X antibody is un-conjugated
Application:	ELISA, Proximity Ligation Assay (PLA), Immunohistochemistry (Paraffin-embedded Sections) (IHC (p))

## Product Details

Purpose:	Mouse monoclonal antibody raised against a partial recombinant TBL1X.
Immunogen:	TBL1X (NP_005638, 478 a.a. ~ 577 a.a) partial recombinant protein with GST tag. MW of the GST tag alone is 26 KDa.
Sequence:	LASASFDSTV RLWDIERGVC THTLTKEHQEP VYSVAFSPDG KYLASGSFDK CVHIWNTQSG NLVHSYRG TG GIFEVCWNAR GDKVGASASD GSVCVLDRK
Clone:	2B6
Isotype:	IgG2b
Cross-Reactivity:	Human
Characteristics:	Antibody Reactive Against Recombinant Protein.

Target Details

Target:	TBL1X
Alternative Name:	TBL1X ( <a href="#">TBL1X Products</a> )
Background:	Full Gene Name: transducin (beta)-like 1X-linked Synonyms: EBI,SMAP55,TBL1
Gene ID:	6907
NCBI Accession:	<a href="#">NM_005647</a>
Pathways:	<a href="#">Sensory Perception of Sound, Regulation of Lipid Metabolism by PPARalpha</a>

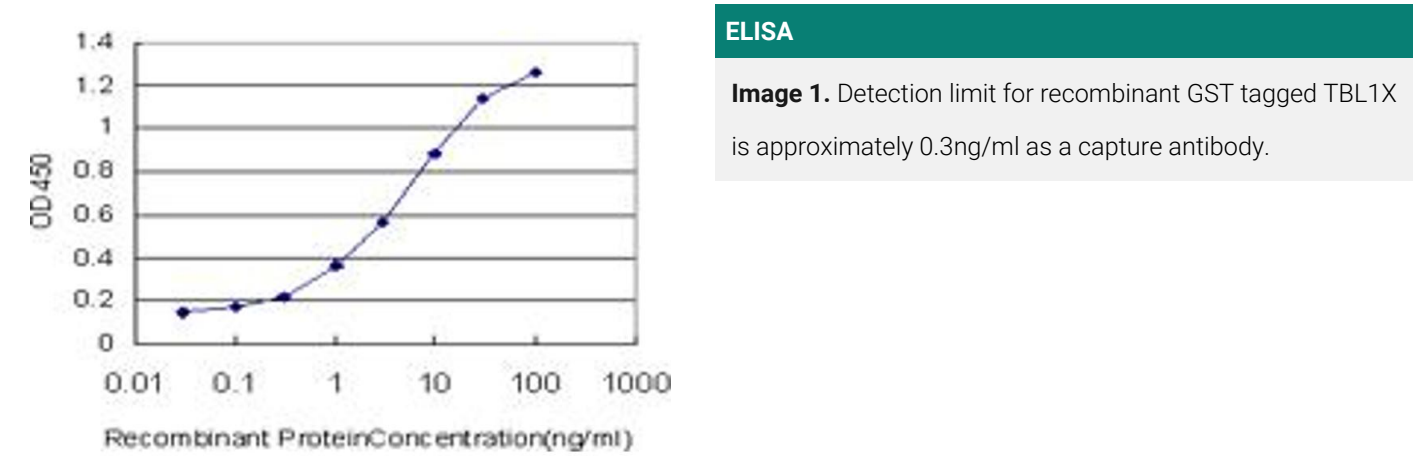
Application Details

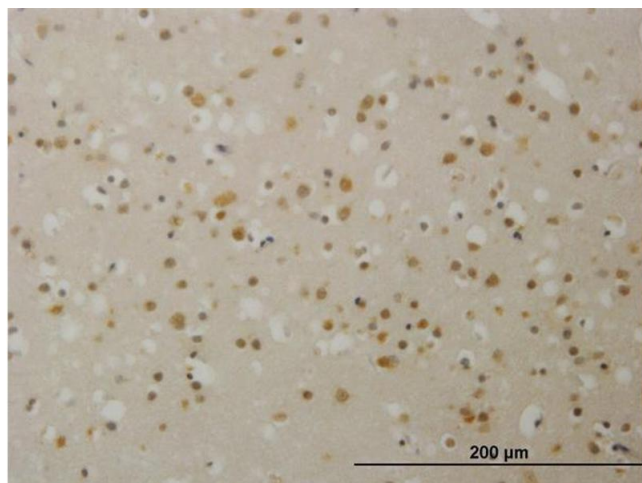
Application Notes:	Optimal working dilution should be determined by the investigator.
Restrictions:	For Research Use only

Handling

Buffer:	In 1x PBS, pH 7.4
Handling Advice:	Aliquot to avoid repeated freezing and thawing.
Storage:	-20 °C
Storage Comment:	Store at -20°C or lower. Aliquot to avoid repeated freezing and thawing.

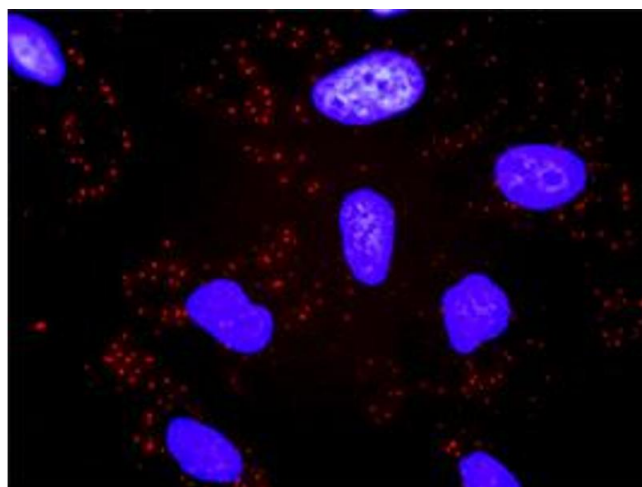
Images





#### Immunostaining

**Image 2.** Immunoperoxidase of monoclonal antibody to TBL1X on formalin-fixed paraffin-embedded human cerebral cortex. [antibody concentration 1.5 ug/ml]



#### Proximity Ligation Assay

**Image 3.** Proximity Ligation Analysis of protein-protein interactions between CACYBP and TBL1X. HeLa cells were stained with anti-CACYBP rabbit purified polyclonal 1:1200 and anti-TBL1X mouse monoclonal antibody 1:50. Each red dot represents the detection of protein-protein interaction complex, and nuclei were counterstained with DAPI (blue).