



[Go to Product page](#)

Datasheet for ABIN520733

## anti-T-Box 6 antibody (AA 191-299)

### 2 Images

#### Overview

Quantity:	100 µg
Target:	T-Box 6 (TBX6)
Binding Specificity:	AA 191-299
Reactivity:	Human
Host:	Mouse
Clonality:	Monoclonal
Conjugate:	This T-Box 6 antibody is un-conjugated
Application:	Western Blotting (WB), ELISA, Immunofluorescence (IF)

#### Product Details

Purpose:	Mouse monoclonal antibody raised against a partial recombinant TBX6.
Immunogen:	TBX6 (NP_004599, 191 a.a. ~ 299 a.a) partial recombinant protein with GST tag. MW of the GST tag alone is 26 KDa.
Sequence:	SFHRVKLTNS TLDPHGHLIL HSMHKYQPRI HLVRAAQLCS QHWGGMASFR FPETTFISVT AYQNPQITQL KIAANPFAKG FRENGRNCKR ERDARVKRKL RGPEPAATE
Clone:	1D11
Isotype:	IgG2a
Cross-Reactivity:	Human
Characteristics:	Antibody Reactive Against Recombinant Protein.

## Target Details

Target:	T-Box 6 (TBX6)
Alternative Name:	TBX6 ( <a href="#">TBX6 Products</a> )
Background:	Full Gene Name: T-box 6 Synonyms: DFNB67
Gene ID:	6911
NCBI Accession:	<a href="#">NM_004608</a>

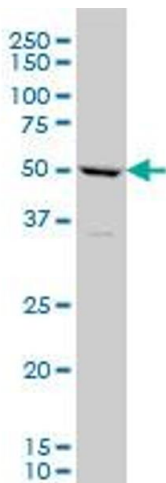
## Application Details

Application Notes:	Optimal working dilution should be determined by the investigator.
Restrictions:	For Research Use only

## Handling

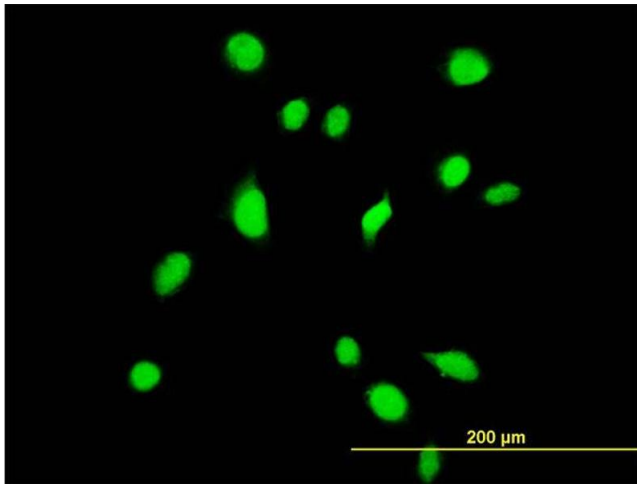
Buffer:	In 1x PBS, pH 7.4
Handling Advice:	Aliquot to avoid repeated freezing and thawing.
Storage:	-20 °C
Storage Comment:	Store at -20°C or lower. Aliquot to avoid repeated freezing and thawing.

## Images



### Western Blotting

**Image 1.** TBX6 monoclonal antibody (M06), clone 1D11  
Western Blot analysis of TBX6 expression in HeLa .



### Immunofluorescence

**Image 2.** Immunofluorescence of monoclonal antibody to TBX6 on HeLa cell. [antibody concentration 35 ug/ml]