



[Go to Product page](#)

Datasheet for ABIN520754

anti-TCF4 antibody (AA 1-365)

5 Images

3 Publications

Overview

Quantity:	100 µg
Target:	TCF4
Binding Specificity:	AA 1-365
Reactivity:	Human
Host:	Mouse
Clonality:	Monoclonal
Conjugate:	This TCF4 antibody is un-conjugated
Application:	Western Blotting (WB), ELISA, Immunofluorescence (IF)

Product Details

Purpose:	Mouse monoclonal antibody raised against a full length recombinant TCF4.
Immunogen:	TCF4 (AAH31056.1, 1 a.a. ~ 365 a.a) full-length recombinant protein with GST tag. MW of the GST tag alone is 26 KDa.
Sequence:	MHHQQRMAAL GTDKELSDLL DFSAMFSPPV SSGKNGPTSL ASGHFTGSNV EDRSSSGSWG NGGHPSPSRN YGDGTPYDHT TSRDLGSHDN LSPPFVNSRI QSKTERGSYS SYGRESNLQG CHQQSLGGD MDMGNPGTLS PTKPGSQYYQ YSSNNPRRRP LHSSAMEVQT KKVVRKVPGL PSSVYAPSAS TADYNRDSPG YPSSKPATST FPSSFFMQDG HHSSDPWSSS SGMNQPGYAG MLGNSSHIPQ SSSYCSLHPH ERLSYPSHSS ADINSSLPPM STFHRSGTNH YSTSSCTPPA NGTDSIMANR GSGAAGSSQT GDALGKALAS IYSPDHTNNS FSSNPSTPVG SPPSLSAGTA VWSRN
Clone:	1G4

Product Details

Isotype:	IgG1
Cross-Reactivity:	Human
Characteristics:	Antibody Reactive Against Recombinant Protein.

Target Details

Target:	TCF4
Alternative Name:	TCF4 (TCF4 Products)
Background:	Full Gene Name: transcription factor 4 Synonyms: E2-2,ITF2,MGC149723,MGC149724,PTHS,SEF2,SEF2-1,SEF2-1A,SEF2-1B,bHLHb19
Gene ID:	6925
Pathways:	WNT Signaling , Positive Regulation of Peptide Hormone Secretion , Peptide Hormone Metabolism , Regulation of Hormone Metabolic Process , Carbohydrate Homeostasis , Stem Cell Maintenance , Protein targeting to Nucleus

Application Details

Application Notes:	Optimal working dilution should be determined by the investigator.
Restrictions:	For Research Use only

Handling

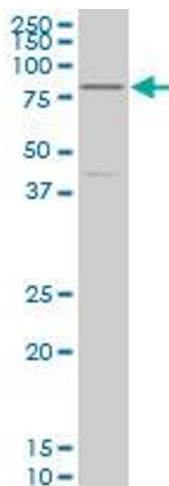
Buffer:	In 1x PBS, pH 7.4
Handling Advice:	Aliquot to avoid repeated freezing and thawing.
Storage:	-20 °C
Storage Comment:	Store at -20°C or lower. Aliquot to avoid repeated freezing and thawing.

Publications

Product cited in:	Luo, Lim, Lee, Granter, Thomas, Vazquez, Widlund, Puigserver: "A PGC1 α -mediated transcriptional axis suppresses melanoma metastasis." in: Nature , Vol. 537, Issue 7620, pp. 422-426, (2016) (PubMed).
	Forrest, Waite, Martin-Rendon, Blake: "Knockdown of human TCF4 affects multiple signaling pathways involved in cell survival, epithelial to mesenchymal transition and neuronal

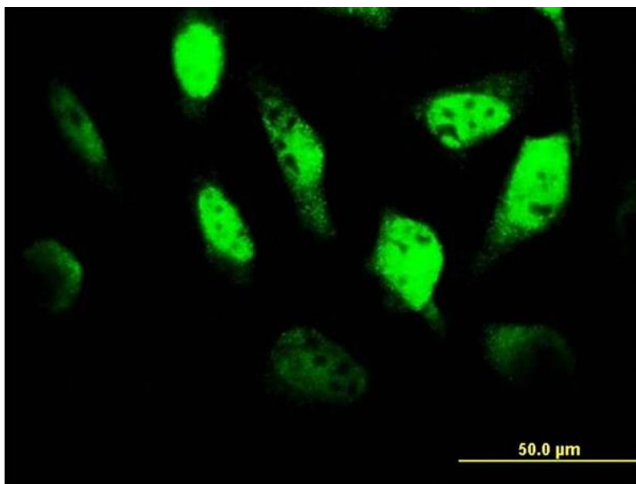
differentiation." in: **PLoS ONE**, Vol. 8, Issue 8, pp. e73169, (2013) ([PubMed](#)).

Tanaka, Itoh, Nishiyama, Takezawa, Kurihara, Itoh, Kato: "Inhibition of endothelial cell activation by bHLH protein E2-2 and its impairment of angiogenesis." in: **Blood**, Vol. 115, Issue 20, pp. 4138-47, (2010) ([PubMed](#)).



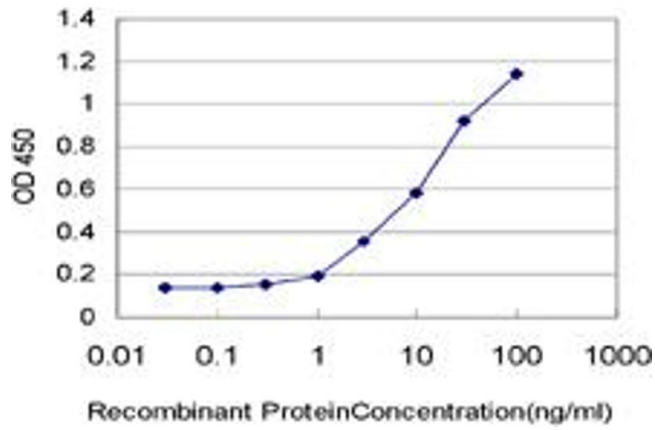
Western Blotting

Image 1. TCF4 monoclonal antibody (M03), clone 1G4
Western Blot analysis of TCF4 expression in K-562 .



Immunofluorescence

Image 2. Immunofluorescence of monoclonal antibody to
TCF4 on HeLa cell. [antibody concentration 10 ug/ml]



ELISA

Image 3. Detection limit for recombinant GST tagged TCF4 is approximately 1 ng/ml as a capture antibody.

Please check the [product details page](#) for more images. Overall 5 images are available for ABIN520754.