



[Go to Product page](#)

Datasheet for ABIN520801
anti-TCP11 antibody (AA 342-441)

3 Images

Overview

| | |
|----------------------|--------------------------------------|
| Quantity: | 100 µg |
| Target: | TCP11 |
| Binding Specificity: | AA 342-441 |
| Reactivity: | Human |
| Host: | Mouse |
| Clonality: | Monoclonal |
| Conjugate: | This TCP11 antibody is un-conjugated |
| Application: | Western Blotting (WB), ELISA |

Product Details

| | |
|-------------------|--|
| Purpose: | Mouse monoclonal antibody raised against a partial recombinant TCP11. |
| Immunogen: | TCP11 (NP_061149.1, 342 a.a. ~ 441 a.a) partial recombinant protein with GST tag. MW of the GST tag alone is 26 KDa. |
| Sequence: | NTASLMGQLQ NIAKKENCVC SVIDQRIHLF LKCLVLGVQ RSLDLPGGL TLIEAELAE GQKFNLTTH NQVFGPYT EILKTLISPA QALETKVESV |
| Clone: | 2E3 |
| Isotype: | IgG2a |
| Cross-Reactivity: | Human |
| Characteristics: | Antibody Reactive Against Recombinant Protein. |

Target Details

| | |
|-------------------|--|
| Target: | TCP11 |
| Alternative Name: | TCP11 (TCP11 Products) |
| Background: | Full Gene Name: t-complex 11 homolog (mouse) Synonyms: D6S230E,KIAA0229,MGC111103 |
| Gene ID: | 6954 |
| NCBI Accession: | NM_018679 |

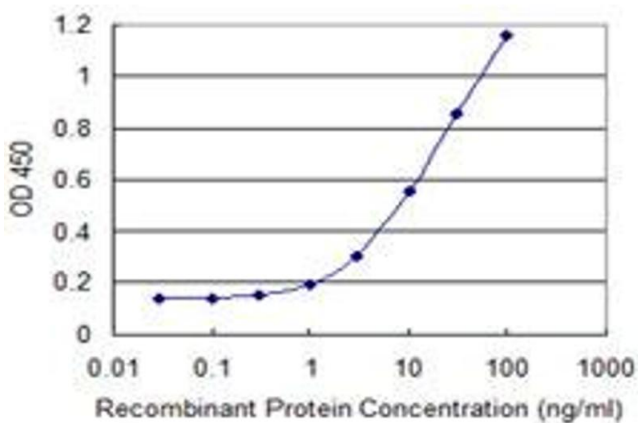
Application Details

| | |
|--------------------|--|
| Application Notes: | Optimal working dilution should be determined by the investigator. |
| Restrictions: | For Research Use only |

Handling

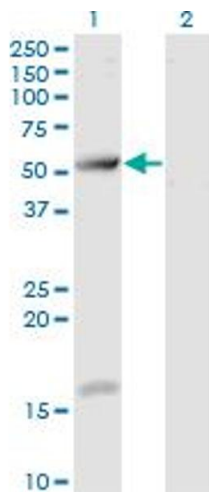
| | |
|------------------|--|
| Buffer: | In 1x PBS, pH 7.4 |
| Handling Advice: | Aliquot to avoid repeated freezing and thawing. |
| Storage: | -20 °C |
| Storage Comment: | Store at -20°C or lower. Aliquot to avoid repeated freezing and thawing. |

Images



ELISA

Image 1. Detection limit for recombinant GST tagged TCP11 is 0.3 ng/ml as a capture antibody.

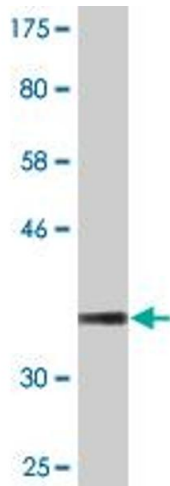


Western Blotting

Image 2. Western Blot analysis of TCP11 expression in transfected 293T cell line by TCP11 monoclonal antibody (M07), clone 2E3.

Lane 1: TCP11 transfected lysate (Predicted MW: 49.3 kDa).

Lane 2: Non-transfected lysate.



Western Blotting

Image 3. Western Blot detection against Immunogen (36.74 kDa).