

Datasheet for ABIN520866
anti-TGFA antibody (AA 1-160)[Go to Product page](#)

2 Images

Overview

Quantity:	100 µg
Target:	TGFA
Binding Specificity:	AA 1-160
Reactivity:	Human
Host:	Rabbit
Clonality:	Polyclonal
Conjugate:	This TGFA antibody is un-conjugated
Application:	Western Blotting (WB), Proximity Ligation Assay (PLA)

Product Details

Purpose:	Rabbit polyclonal antibody raised against a full-length human TGFA protein.
Immunogen:	TGFA (NP_003227.1, 1 a.a. ~ 160 a.a) full-length human protein.
Sequence:	MVPSAGQLAL FALGIVLAAC QALENSTSPL SADPPVAAAV VSHFNDPCDS HTQFCFHGTC RFLVQEDKPA CVCHSGYVGA RCEHADLLAV VAASQKKQAI TALVVVSIVA LAVLIITCVL IHCCQVRKHC EWCRAICRH EKPSALLKGR TACCHSETVV
Cross-Reactivity:	Human
Characteristics:	Antibody reactive against mammalian transfected lysate.

Target Details

Target:	TGFA
---------	------

Target Details

Alternative Name:	TGFA (TGFA Products)
Background:	Full Gene Name: transforming growth factor, alpha Synonyms: TFGA
Gene ID:	7039
NCBI Accession:	NM_003236
Pathways:	NF-kappaB Signaling , RTK Signaling , EGFR Signaling Pathway

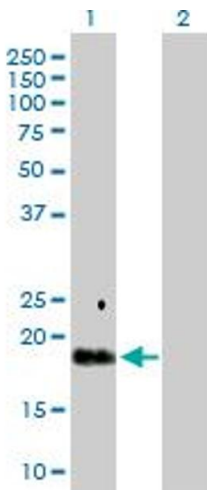
Application Details

Application Notes:	Optimal working dilution should be determined by the investigator.
Restrictions:	For Research Use only

Handling

Buffer:	In 1x PBS, pH 7.4
Handling Advice:	Aliquot to avoid repeated freezing and thawing.
Storage:	-20 °C
Storage Comment:	Store at -20°C or lower. Aliquot to avoid repeated freezing and thawing.

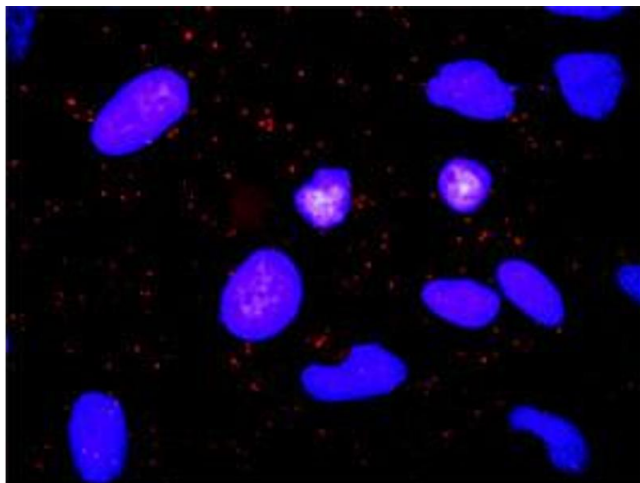
Images



Western Blotting

Image 1. Western Blot analysis of TGFA expression in transfected 293T cell line by TGFA MaxPab polyclonal antibody.

Lane 1: TGFA transfected lysate(17.00 KDa).
Lane 2: Non-transfected lysate.



Proximity Ligation Assay

Image 2. Proximity Ligation Analysis of protein-protein interactions between TGFA and ADAM17. HeLa cells were stained with anti-TGFA rabbit purified polyclonal 1:1200 and anti-ADAM17 mouse monoclonal antibody 1:50. Each red dot represents the detection of protein-protein interaction complex, and nuclei were counterstained with DAPI (blue).