

Datasheet for ABIN520874  
**anti-TGFB2 antibody (AA 1-414)**

## 2 Images

[Go to Product page](#)

## Overview

Quantity:	100 µg
Target:	TGFB2
Binding Specificity:	AA 1-414
Reactivity:	Human
Host:	Rabbit
Clonality:	Polyclonal
Conjugate:	This TGFB2 antibody is un-conjugated
Application:	Western Blotting (WB), Proximity Ligation Assay (PLA)

## Product Details

Purpose:	Rabbit polyclonal antibody raised against a full-length human TGFB2 protein.
Immunogen:	TGFB2 (AAH99635.1, 1 a.a. ~ 414 a.a) full-length human protein.
Sequence:	MHYCVLSAFL ILHLVTVALS LSTCSTLDMD QFMRKRIEAI RGQILSKLKL TSPPEDYPEP EEVPPEVISI YNSTRDLLQE KASRRAAACE RERSDEEYYA KEVYKIDMPP FFPSENAIPP TFYRPYFRIV RFDVSAMEKN ASNLVKAEFR VFRLQNPKEAR VPEQRIELYQ ILKSKDLTSP TQRYIDSKVV KTRAEGEWLS FDVTDVHVEW LHHKDRNLGF KISLHCPCT FVPSNNYIIP NKSELEARF AGIDGTSTYT SGDQKTIKST RKKNSGKTPH LLLMLLPSYR LESQQTNRRK KRALDAAYCF RNVQDNCCLR PLYIDFKRDL GWKWIHEPKG YNANFCAGAC PYLWSSDTQH SRVLSLYNTI NPEASASPCC VSQDLEPLTI LYYIGKTPKI EQLSNMIVKS CKCS
Cross-Reactivity:	Human
Characteristics:	Antibody reactive against mammalian transfected lysate.

## Target Details

Target:	TGFB2
Alternative Name:	TGFB2 ( <a href="#">TGFB2 Products</a> )
Background:	Full Gene Name: transforming growth factor, beta 2 Synonyms: MGC116892,TGF-beta2
Gene ID:	7042
NCBI Accession:	<a href="#">NM_003238</a>
Pathways:	<a href="#">Cell-Cell Junction Organization</a> , <a href="#">Production of Molecular Mediator of Immune Response</a> , <a href="#">Protein targeting to Nucleus</a>

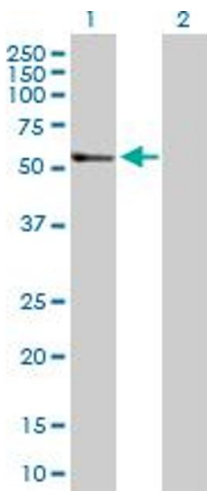
## Application Details

Application Notes:	Optimal working dilution should be determined by the investigator.
Restrictions:	For Research Use only

## Handling

Buffer:	In 1x PBS, pH 7.4
Handling Advice:	Aliquot to avoid repeated freezing and thawing.
Storage:	-20 °C
Storage Comment:	Store at -20°C or lower. Aliquot to avoid repeated freezing and thawing.

## Images

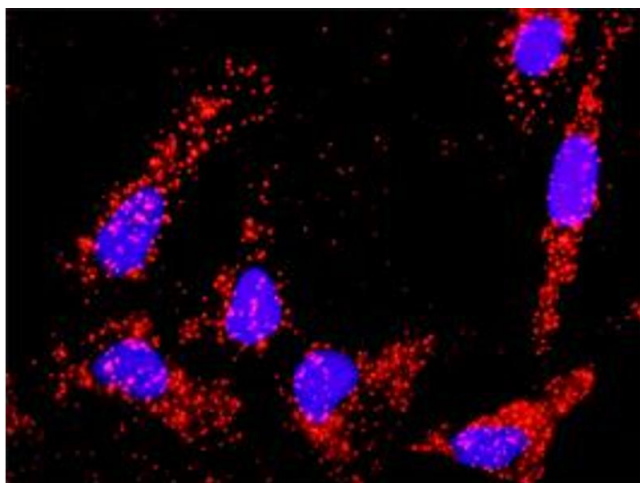


### Western Blotting

**Image 1.** Western Blot analysis of TGFB2 expression in transfected 293T cell line by TGFB2 MaxPab polyclonal antibody.

Lane 1: TGFB2 transfected lysate(47.70 kDa).

Lane 2: Non-transfected lysate.



### Proximity Ligation Assay

**Image 2.** Proximity Ligation Analysis of protein-protein interactions between TGFB2 and APP. HeLa cells were stained with anti-TGFB2 rabbit purified polyclonal 1:1200 and anti-APP mouse monoclonal antibody 1:50. Each red dot represents the detection of protein-protein interaction complex, and nuclei were counterstained with DAPI (blue).