



[Go to Product page](#)

Datasheet for ABIN520876
anti-LEFTY2 antibody (AA 1-366)

2 Images

Overview

Quantity:	100 µL
Target:	LEFTY2
Binding Specificity:	AA 1-366
Reactivity:	Human
Host:	Rabbit
Clonality:	Polyclonal
Conjugate:	This LEFTY2 antibody is un-conjugated
Application:	Western Blotting (WB), Immunoprecipitation (IP)

Product Details

Purpose:	Rabbit polyclonal antibody raised against a full-length human LEFTY2 protein.
Immunogen:	LEFTY2 (NP_003231.2, 1 a.a. ~ 366 a.a) full-length human protein.
Sequence:	MWPLWLCWAL WVLPLAGPGA ALTEEQLLGS LLRQLQLSEV PVLDRADMEK LVIPAHVRAQ YVLLRRSHG DRSRGKRFSQ SFREVAGRFL ASEASTHLLV FGMEQRLPPN SELVQAVLRL FQEPVPKAAL HRHGRLSPRS AQARVTVEWL RVRDDGNSRT SLIDSRLVSV HESGWKAFDV TEAVNFWQQL SRPRQPLLLQ VSVQREHLGP LASGAHKLVR FASQGAPAGL GEPQLELHTL DLRDYGAQGD CDPEAPMTEG TRCCRQEMYI DLQGMKWAKN WVLEPPGFLA YECVGTCCQP PEALAFNWPFLGPRQCIASE TASLPMIVSI KEGGRTRPQV VSLPNMRVQK CSCASDGALV PRRLQP
Cross-Reactivity:	Human
Characteristics:	Antibody reactive against mammalian transfected lysate.

Target Details

Target:	LEFTY2
Alternative Name:	LEFTY2 (LEFTY2 Products)
Background:	Full Gene Name: left-right determination factor 2 Synonyms: EBAF,LEFTA,LEFTYA,MGC46222,TGFB4
Gene ID:	7044
NCBI Accession:	NM_003240

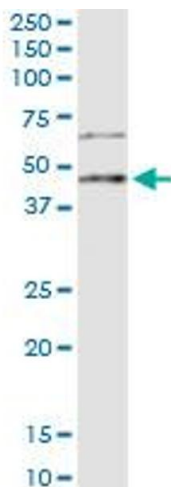
Application Details

Application Notes:	Optimal working dilution should be determined by the investigator.
Restrictions:	For Research Use only

Handling

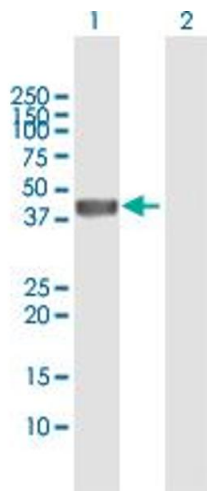
Format:	Liquid
Buffer:	No additive
Preservative:	Without preservative
Handling Advice:	Aliquot to avoid repeated freezing and thawing.
Storage:	-20 °C
Storage Comment:	Store at -20°C or lower. Aliquot to avoid repeated freezing and thawing.

Images



Immunoprecipitation

Image 1. Immunoprecipitation of LEFTY2 transfected lysate using anti-LEFTY2 MaxPab rabbit polyclonal antibody and Protein A Magnetic Bead , and immunoblotted with LEFTY2 purified MaxPab mouse polyclonal antibody (B01P) .



Western Blotting

Image 2. Western Blot analysis of LEFTY2 expression in transfected 293T cell line by LEFTY2 MaxPab polyclonal antibody.

Lane 1: LEFTY2 transfected lysate(40.9 KDa).

Lane 2: Non-transfected lysate.