



[Go to Product page](#)

Datasheet for ABIN520913
anti-TIE1 antibody (AA 422-521)

1 Image

Overview

| | |
|----------------------|-------------------------------------|
| Quantity: | 100 µg |
| Target: | TIE1 |
| Binding Specificity: | AA 422-521 |
| Reactivity: | Human |
| Host: | Mouse |
| Clonality: | Monoclonal |
| Conjugate: | This TIE1 antibody is un-conjugated |
| Application: | ELISA |

Product Details

| | |
|-------------------|---|
| Purpose: | Mouse monoclonal antibody raised against a partial recombinant TIE1. |
| Immunogen: | TIE1 (NP_005415, 422 a.a. ~ 521 a.a) partial recombinant protein with GST tag. MW of the GST tag alone is 26 KDa. |
| Sequence: | GFWECRVSTS GGQDSRRFKV NVKVPPVPLA APRLLTKQSR QLWVSPLVSF SGDGPSTVVR LHYRPQDSTM DWSTIVVDPS ENVTLMNLRP KTGYSVRVQ* |
| Clone: | 3F4 |
| Isotype: | IgG2a |
| Cross-Reactivity: | Human |
| Characteristics: | Antibody Reactive Against Recombinant Protein. |

Target Details

| | |
|-------------------|--|
| Target: | TIE1 |
| Alternative Name: | TIE1 (TIE1 Products) |
| Background: | Full Gene Name: tyrosine kinase with immunoglobulin-like and EGF-like domains 1 Synonyms: JTK14,TIE |
| Gene ID: | 7075 |
| NCBI Accession: | NM_005424 |
| Pathways: | RTK Signaling |

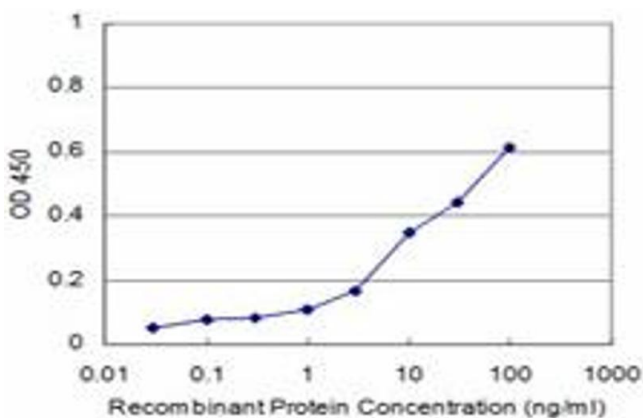
Application Details

| | |
|--------------------|--|
| Application Notes: | Optimal working dilution should be determined by the investigator. |
| Restrictions: | For Research Use only |

Handling

| | |
|------------------|--|
| Buffer: | In 1x PBS, pH 7.4 |
| Handling Advice: | Aliquot to avoid repeated freezing and thawing. |
| Storage: | -20 °C |
| Storage Comment: | Store at -20°C or lower. Aliquot to avoid repeated freezing and thawing. |

Images



ELISA

Image 1. Detection limit for recombinant GST tagged TIE1 is approximately 1ng/ml as a capture antibody.