



[Go to Product page](#)

Datasheet for ABIN520957
anti-TLL1 antibody (AA 1-392)

1 Image

Overview

Quantity:	50 µL
Target:	TLL1
Binding Specificity:	AA 1-392
Reactivity:	Human
Host:	Mouse
Clonality:	Polyclonal
Conjugate:	This TLL1 antibody is un-conjugated
Application:	Western Blotting (WB)

Product Details

Purpose:	Mouse polyclonal antibody raised against a full-length human TLL1 protein.
Immunogen:	TLL1 (AAH16922.1, 1 a.a. ~ 392 a.a) full-length human protein.
Sequence:	MGLGTLSPRM LVWLVASGIV FYGELWVCAG LDYDYTFDGN EEDKTETIDY KDPCKAAVFW GDIALDDEDL NIFQIDRTID LTQNPFGNLG HTTGGLDHA MSKCRGALYQ LIDRIRIGF GLEQNNTVKG KVPLQFSGQN EKNRVPRAA SRTERIWPGG VIPYVIGGNF TGSQRAMFKQ AMRHWEKHTC VTFIERSDEE SYIVFTYRPC GCCSYVGRRG NGPQAISIGK NCDKFGIVVH ELGHVIGFWH EHTRPDRDNH VTIIRENIQP GQEYNFLKME PGEVNSLGER YDFDSIMHYA RNTFSRGMFL DTILPSRDDN GIRPAIGQRT RLSKGDIAQA RKLRYCPACG ETLQESNGNL SSPGFPNGYP SYTHCIWRVS VTPGEKVVFS LC
Cross-Reactivity:	Human
Characteristics:	Antibody reactive against mammalian transfected lysate.

Target Details

Target:	TLL1
Alternative Name:	TLL1 (TLL1 Products)
Background:	Full Gene Name: tolloid-like 1 Synonyms: TLL
Gene ID:	7092

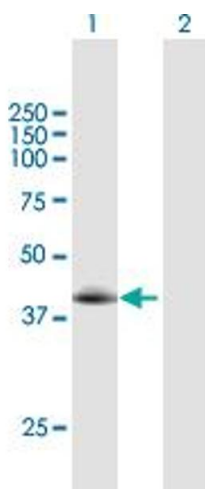
Application Details

Application Notes:	Optimal working dilution should be determined by the investigator.
Restrictions:	For Research Use only

Handling

Format:	Liquid
Buffer:	No additive
Preservative:	Without preservative
Handling Advice:	Aliquot to avoid repeated freezing and thawing.
Storage:	-20 °C
Storage Comment:	Store at -20°C or lower. Aliquot to avoid repeated freezing and thawing.

Images



Western Blotting

Image 1. Western Blot analysis of TLL1 expression in transfected 293T cell line by TLL1 MaxPab polyclonal antibody.

Lane 1: TLL1 transfected lysate(43.12 KDa).

Lane 2: Non-transfected lysate.