

Datasheet for ABIN521072

**anti-TPT1 antibody (AA 35-138)**

6 Images

1 Publication

[Go to Product page](#)

## Overview

Quantity:	100 µg
Target:	TPT1
Binding Specificity:	AA 35-138
Reactivity:	Human
Host:	Mouse
Clonality:	Monoclonal
Conjugate:	This TPT1 antibody is un-conjugated
Application:	Western Blotting (WB), ELISA

## Product Details

Purpose:	Mouse monoclonal antibody raised against a partial recombinant TPT1.
Immunogen:	TPT1 (AAH22436, 35 a.a. ~ 138 a.a) partial recombinant protein with GST tag. MW of the GST tag alone is 26 KDa.
Sequence:	GVDIVMNHHL QETSFTKEAY KKYIKDYMKS IKGKLEEQRP ERVKPFMTGA AEQIKHILAN FKNYQFFIGE NMNPDGMVAL LDYREDGVTP YMIFFKDGLE MEKC
Clone:	2C4
Isotype:	IgG2a
Cross-Reactivity:	Human, Mouse, Rat
Characteristics:	Antibody Reactive Against Recombinant Protein.

## Target Details

Target:	TPT1
Alternative Name:	TPT1 ( <a href="#">TPT1 Products</a> )
Background:	Full Gene Name: tumor protein, translationally-controlled 1 Synonyms: FLJ27337,HRF,TCTP,p02
Gene ID:	7178
Pathways:	<a href="#">Response to Water Deprivation</a> , <a href="#">Regulation of Cell Size</a> , <a href="#">Negative Regulation of intrinsic apoptotic Signaling</a>

## Application Details

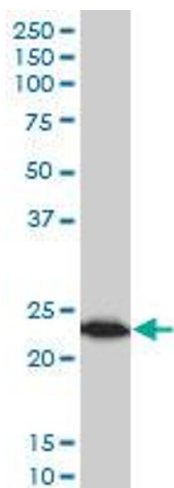
Application Notes:	Optimal working dilution should be determined by the investigator.
Restrictions:	For Research Use only

## Handling

Buffer:	In 1x PBS, pH 7.4
Handling Advice:	Aliquot to avoid repeated freezing and thawing.
Storage:	-20 °C
Storage Comment:	Store at -20°C or lower. Aliquot to avoid repeated freezing and thawing.

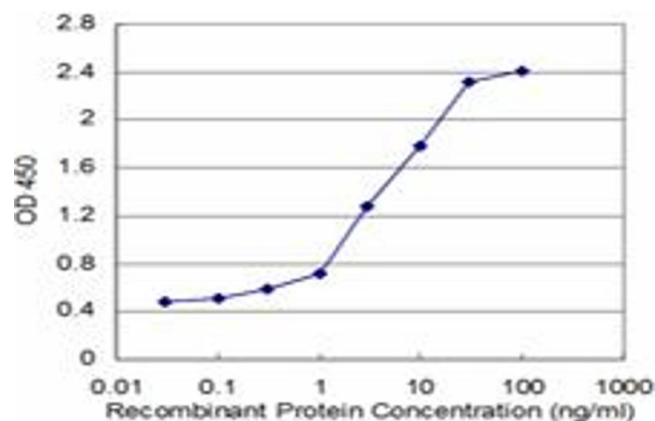
## Publications

Product cited in:	Sinthujaroen, Wanachottrakul, Pinkaew, Petersen, Phongdara, Sheffield-Moore, Fujise: "Elevation of serum fortilin levels is specific for apoptosis and signifies cell death in vivo." in: <b>BBA clinical</b> , Vol. 2, pp. 103-111, (2015) ( <a href="#">PubMed</a> ).
-------------------	---



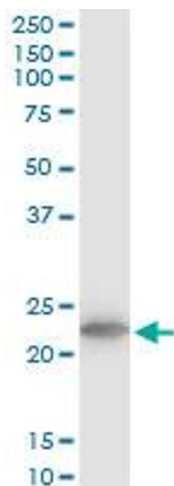
#### Western Blotting

**Image 1.** TPT1 monoclonal antibody (M03), clone 2C4  
Western Blot analysis of TPT1 expression in MCF-7 .



#### ELISA

**Image 2.** Detection limit for recombinant GST tagged TPT1  
is approximately 0.3ng/ml as a capture antibody.



#### Western Blotting

**Image 3.** TPT1 monoclonal antibody (M03), clone 2C4.  
Western Blot analysis of TPT1 expression in NIH/3T3.

Please check the [product details page](#) for more images. Overall 6 images are available for ABIN521072.