



[Go to Product page](#)

Datasheet for ABIN521073
anti-TPTE antibody (AA 1-533)

2 Images

Overview

Quantity:	50 µg
Target:	TPTE
Binding Specificity:	AA 1-533
Reactivity:	Human
Host:	Mouse
Clonality:	Polyclonal
Conjugate:	This TPTE antibody is un-conjugated
Application:	Western Blotting (WB), Flow Cytometry (FACS)

Product Details

Purpose:	Mouse polyclonal antibody raised against a full-length human TPTE protein.
Immunogen:	TPTE (AAH28719.1, 1 a.a. ~ 533 a.a) full-length human protein.
Sequence:	MNESPDPTDL AGVIELGPN DSPQTSEFKG ATEEAPAKES VLARLSKFEV EDAENVASYD SKIKKIVHSI VSSFAFGLFG VFLVLLDVTL ILADLIFTDS KLYIPLEYRS ISLAIALFFL MDVLLRVFVE RRQQYFSDLF NILDTAIIVI LLLVDVVYIF FDIKLLRNIP RWTHLLRLLR LIILLRIFHL FHQKRQLEKL IRRRVSENKR RYTRDGFDDL LTYVTERIIA MSFPSSGRQS FYRNPIKEV RFLDKKHRNH YRVYNLCSEY AYDPKHFHNR VVRIMIDDHN VPTLHQMVVF TKEVNEWMAQ DLENIVAIHC KGGTDRTGTM VCAFLIASEI CSTAKESLYY FGERRTDKTH SEKFQGVETP SQKRYVAYFA QVKHLYNWNL PRRRILFIKH FIIYSIPRYV RDLKIQIEME KKVVFSTISL GKCSVLDNIT TDKILIDVFD GPPLYDDVKV QFFYSNLPTY YDNCSEFYFWL HTSFIENNRL YLPKNELDNL HKQKARRIYP SDFAVEILFG EKMTSSDVVA GSD

Product Details

Cross-Reactivity:	Human
Characteristics:	Antibody reactive against mammalian transfected lysate.

Target Details

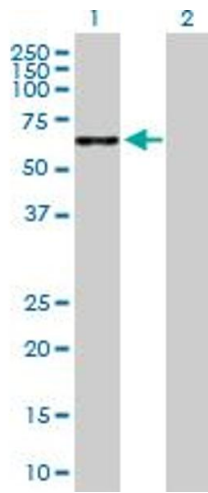
Target:	TPTE
Alternative Name:	TPTE (TPTE Products)
Background:	Full Gene Name: transmembrane phosphatase with tensin homology Synonyms: PTEN2
Gene ID:	7179
Pathways:	Inositol Metabolic Process

Application Details

Application Notes:	Optimal working dilution should be determined by the investigator.
Restrictions:	For Research Use only

Handling

Buffer:	In 1x PBS, pH 7.4
Handling Advice:	Aliquot to avoid repeated freezing and thawing.
Storage:	-20 °C
Storage Comment:	Store at -20°C or lower. Aliquot to avoid repeated freezing and thawing.

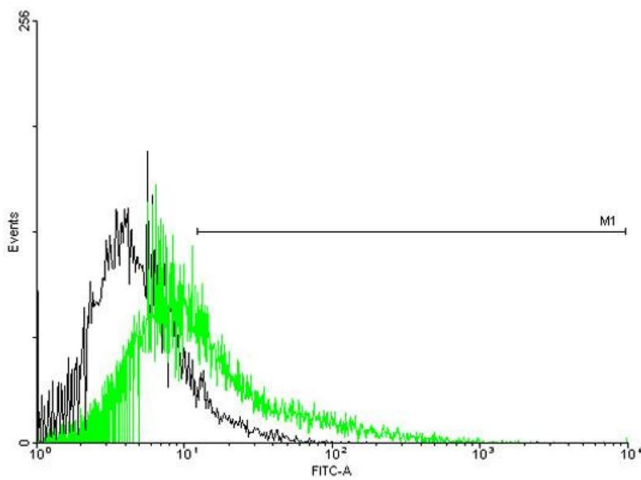


Western Blotting

Image 1. Western Blot analysis of TPTE expression in transfected 293T cell line by TPTE MaxPab polyclonal antibody.

Lane 1: TPTE transfected lysate(58.63 KDa).

Lane 2: Non-transfected lysate.



Flow Cytometry

Image 2. FACS analysis of negative control 293 cells (Black) and TPTE expressing 293 cells (Green) using TPTE purified MaxPab mouse polyclonal antibody.