



[Go to Product page](#)

Datasheet for ABIN521096
anti-TRAF6 antibody (AA 413-522)

5 Images

Overview

Quantity:	50 µg
Target:	TRAF6
Binding Specificity:	AA 413-522
Reactivity:	Human
Host:	Mouse
Clonality:	Monoclonal
Conjugate:	This TRAF6 antibody is un-conjugated
Application:	Western Blotting (WB), ELISA, RNA Interference (RNAi), Proximity Ligation Assay (PLA)

Product Details

Purpose:	Mouse monoclonal antibody raised against a partial recombinant TRAF6.
Immunogen:	TRAF6 (AAH31052, 413 a.a. ~ 522 a.a) partial recombinant protein with GST tag. MW of the GST tag alone is 26 KDa.
Sequence:	TMQGEYDSDL PWPFGTIRL TILDQSEAPV RQNHEEIMDA KPELLAFQRP TIPRNPKGFG YVTFMHLEAL RQRTFIKDDT LLVRCVSTR FDMGSLRREG FQPRSTDAGV
Clone:	1B2
Isotype:	IgG2b
Cross-Reactivity:	Human
Characteristics:	Antibody Reactive Against Recombinant Protein.

Target Details

Target:	TRAF6
Alternative Name:	TRAF6 (TRAF6 Products)
Background:	Full Gene Name: TNF receptor-associated factor 6 Synonyms: MGC:3310,RNF85
Gene ID:	7189
Pathways:	NF-kappaB Signaling , TCR Signaling , TLR Signaling , Fc-epsilon Receptor Signaling Pathway , Neurotrophin Signaling Pathway , Activation of Innate immune Response , Regulation of Leukocyte Mediated Immunity , Positive Regulation of Immune Effector Process , Production of Molecular Mediator of Immune Response , Tube Formation , Hepatitis C , Toll-Like Receptors Cascades , Ubiquitin Proteasome Pathway

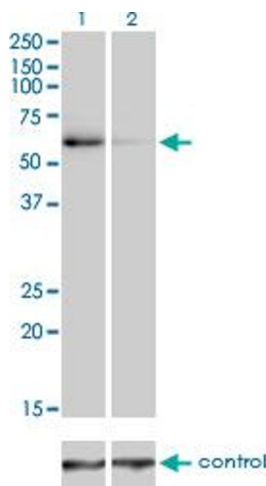
Application Details

Application Notes:	Optimal working dilution should be determined by the investigator.
Restrictions:	For Research Use only

Handling

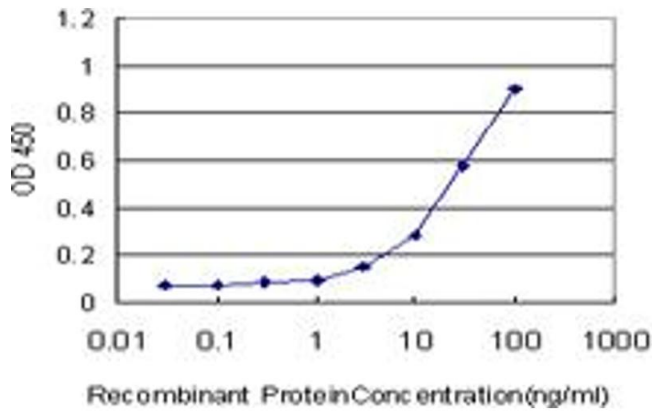
Buffer:	In 1x PBS, pH 7.4
Handling Advice:	Aliquot to avoid repeated freezing and thawing.
Storage:	-20 °C
Storage Comment:	Store at -20°C or lower. Aliquot to avoid repeated freezing and thawing.

Images



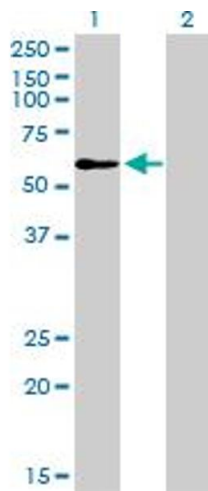
Western Blotting

Image 1. Western blot analysis of TRAF6 over-expressed 293 cell line, cotransfected with TRAF6 Validated Chimera RNAi (Lane 2) or non-transfected control (Lane 1). Blot probed with TRAF6 monoclonal antibody (M02), clone 1B2. GAPDH (36.1 kDa) used as specificity and loading control.



ELISA

Image 2. Detection limit for recombinant GST tagged TRAF6 is approximately 1 ng/ml as a capture antibody.



Western Blotting

Image 3. Western Blot analysis of TRAF6 expression in transfected 293T cell line by TRAF6 monoclonal antibody (M02), clone 1B2.

Lane 1: TRAF6 transfected lysate(59.6 kDa).

Lane 2: Non-transfected lysate.

Please check the [product details page](#) for more images. Overall 5 images are available for ABIN521096.