

Datasheet for ABIN521143  
**anti-TUBB2A antibody (AA 1-445)**



[Go to Product page](#)

6 Images

Overview

Quantity:	100 µg
Target:	TUBB2A
Binding Specificity:	AA 1-445
Reactivity:	Human
Host:	Mouse
Clonality:	Monoclonal
Conjugate:	This TUBB2A antibody is un-conjugated
Application:	Western Blotting (WB), ELISA, Immunohistochemistry (Paraffin-embedded Sections) (IHC (p))

Product Details

Purpose:	Mouse monoclonal antibody raised against a full-length recombinant TUBB2A.
Immunogen:	TUBB2A (AAH01194, 1 a.a. ~ 445 a.a) full-length recombinant protein with GST tag. MW of the GST tag alone is 26 KDa.
Sequence:	MREIVHIQAG QCGNQIGAKF WEVISDEHGI DPTGSYHGDS DLQLERINVY YNEAAGNKYV PRAILVDLEP GTMDSVRS GP FGQIFRPDNF VFGQSGAGNN WAKGHYTEGA ELVDSVLDVV RKESESCDCL QGFQLTHSLG GGTGSGMGTL LISKIREEYP DRIMNTFSVM PSPKVS DTVV EPYNATLSVH QLVENTDETY SIDNEALYDI CFRTLKLTTP TYGDLNHLVS ATMSGVTTCL RFPGQLNADL RKLAVNMVPF PRLHFFMPGF APLTSRGSQQ YRALTVPELT QQMFDSKNMM AACDPRHGRY LTVAAIFRGR MSMKEVDEQM LNVQKNSSY FVEWIPNNVK TAVCDIPPRG LKMSATFIGN STAIQELFKR ISEQFTAMFR RKAFLHWYTG EGMDMEFTE AESNTNDLVS EYQYQDATA DEQGEFEEEE GEDEA

## Product Details

---

Clone:	3C12
Isotype:	IgG2a
Cross-Reactivity:	Human, Mouse, Rat
Characteristics:	Antibody Reactive Against Recombinant Protein.

## Target Details

---

Target:	TUBB2A
Alternative Name:	TUBB2A ( <a href="#">TUBB2A Products</a> )
Background:	Full Gene Name: tubulin, beta 2A Synonyms: TUBB, TUBB2, dJ40E16.7
Gene ID:	7280
Pathways:	<a href="#">Microtubule Dynamics</a> , <a href="#">M Phase</a>

## Application Details

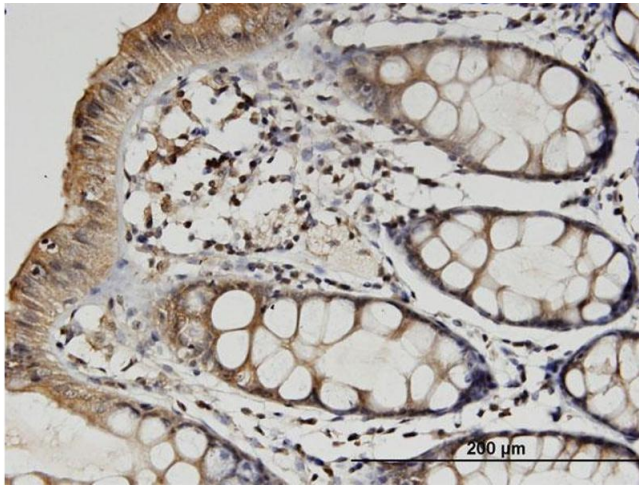
---

Application Notes:	Optimal working dilution should be determined by the investigator.
Restrictions:	For Research Use only

## Handling

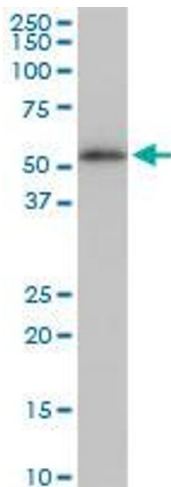
---

Buffer:	In 1x PBS, pH 7.4
Handling Advice:	Aliquot to avoid repeated freezing and thawing.
Storage:	-20 °C
Storage Comment:	Store at -20°C or lower. Aliquot to avoid repeated freezing and thawing.



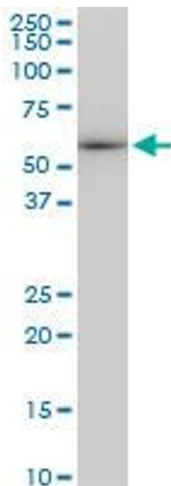
### Immunostaining

**Image 1.** Immunoperoxidase of monoclonal antibody to TUBB2A on formalin-fixed paraffin-embedded human colon. [antibody concentration 6 ug/ml]



### Western Blotting

**Image 2.** TUBB2A monoclonal antibody (M02), clone 3C12. Western Blot analysis of TUBB2A expression in Jurkat.



### Western Blotting

**Image 3.** TUBB2A monoclonal antibody (M02), clone 3C12. Western Blot analysis of TUBB2A expression in NIH/3T3.

Please check the [product details page](#) for more images. Overall 6 images are available for ABIN521143.