



[Go to Product page](#)

Datasheet for ABIN521210  
**anti-UBE2B antibody (AA 1-152)**

3 Images

### Overview

Quantity:	100 µg
Target:	UBE2B
Binding Specificity:	AA 1-152
Reactivity:	Human
Host:	Mouse
Clonality:	Monoclonal
Conjugate:	This UBE2B antibody is un-conjugated
Application:	Western Blotting (WB), ELISA

### Product Details

Purpose:	Mouse monoclonal antibody raised against a full-length recombinant UBE2B.
Immunogen:	UBE2B (AAH08470.1, 1 a.a. ~ 152 a.a) full-length recombinant protein with GST tag. MW of the GST tag alone is 26 KDa.
Sequence:	MSTPARRRLM RDFKRLQEDP PVGVSGAPSE NNIMQWNAVI FGPEGTPFED GTFKLVIEFS EEYPNKPPTV RFLSKMFHPN VYADGSICLD ILQNRWSPTY DVSSILTSIQ SLLDEPNPNS PANSQAAQLY QENKREYEKR VSAIVEQSWN DS
Clone:	1F11
Isotype:	IgG2a
Cross-Reactivity:	Human
Characteristics:	Antibody Reactive Against Recombinant Protein.

## Target Details

Target:	UBE2B
Alternative Name:	UBE2B ( <a href="#">UBE2B Products</a> )
Target Type:	Viral Protein
Background:	Full Gene Name: ubiquitin-conjugating enzyme E2B (RAD6 homolog) Synonyms: E2-17 kDa,HHR6B,HR6B,RAD6B,UBC2
Gene ID:	7320

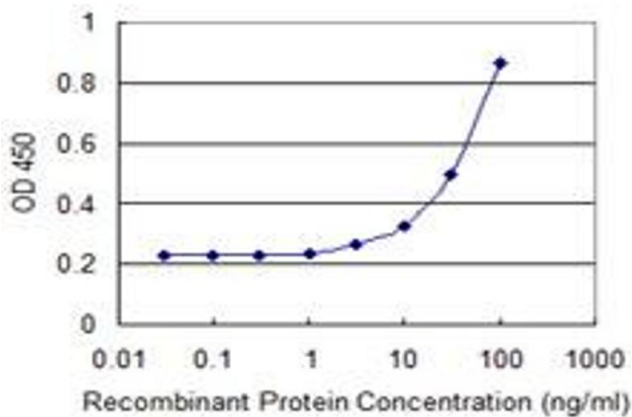
## Application Details

Application Notes:	Optimal working dilution should be determined by the investigator.
Restrictions:	For Research Use only

## Handling

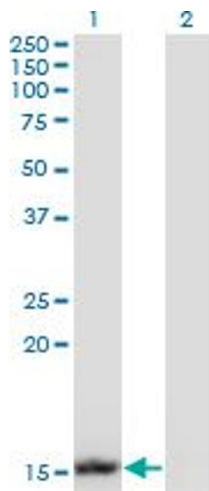
Buffer:	In 1x PBS, pH 7.4
Handling Advice:	Aliquot to avoid repeated freezing and thawing.
Storage:	-20 °C
Storage Comment:	Store at -20°C or lower. Aliquot to avoid repeated freezing and thawing.

## Images



### ELISA

**Image 1.** Detection limit for recombinant GST tagged UBE2B is 1 ng/ml as a capture antibody.

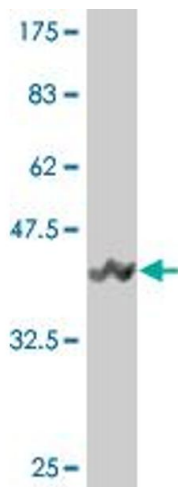


### Western Blotting

**Image 2.** Western Blot analysis of UBE2B expression in transfected 293T cell line by UBE2B monoclonal antibody (M13), clone 1F11.

Lane 1: UBE2B transfected lysate(17.3 kDa).

Lane 2: Non-transfected lysate.



### Western Blotting

**Image 3.** Western Blot detection against Immunogen (42.35 kDa).