



[Go to Product page](#)

Datasheet for ABIN521219
anti-UBE2V1 antibody (AA 1-147)

4 Images

Overview

Quantity:	50 µg
Target:	UBE2V1
Binding Specificity:	AA 1-147
Reactivity:	Human
Host:	Mouse
Clonality:	Polyclonal
Conjugate:	This UBE2V1 antibody is un-conjugated
Application:	Western Blotting (WB), Immunofluorescence (IF)

Product Details

Purpose:	Mouse polyclonal antibody raised against a full-length human UBE2V1 protein.
Immunogen:	UBE2V1 (AAH00468, 1 a.a. ~ 147 a.a) full-length human protein.
Sequence:	MAATTGSGVK VPRNFRLLLE LEEGQKGVGD GTVSWGLEDD EDMTLTRWTG MIIGPPRTIY ENRIYSLKIE CGPKYPEAPP FVRFVTKINM NGVNSSNGVV DPRAISVLAK WQNSYSIKVV LQELRRLLMMS KENMKLPQPP EGQCYSN
Cross-Reactivity:	Human
Characteristics:	Antibody reactive against mammalian transfected lysate.

Target Details

Target:	UBE2V1
---------	--------

Target Details

Alternative Name:	UBE2V1 (UBE2V1 Products)
Background:	Full Gene Name: ubiquitin-conjugating enzyme E2 variant 1 Synonyms: CIR1,CROC-1,CROC1,UBE2V,UEV-1,UEV1,UEV1A
Gene ID:	7335
Pathways:	TCR Signaling , Fc-epsilon Receptor Signaling Pathway , Activation of Innate immune Response , Toll-Like Receptors Cascades

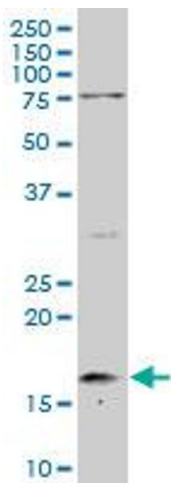
Application Details

Application Notes:	Optimal working dilution should be determined by the investigator.
Restrictions:	For Research Use only

Handling

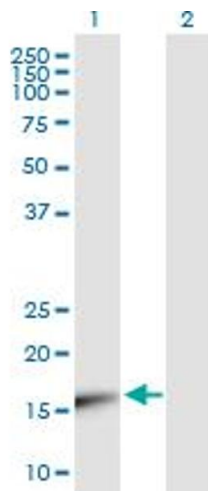
Buffer:	In 1x PBS, pH 7.4
Handling Advice:	Aliquot to avoid repeated freezing and thawing.
Storage:	-20 °C
Storage Comment:	Store at -20°C or lower. Aliquot to avoid repeated freezing and thawing.

Images



Western Blotting

Image 1. UBE2V1 MaxPab polyclonal antibody. Western Blot analysis of UBE2V1 expression in human pancreas.

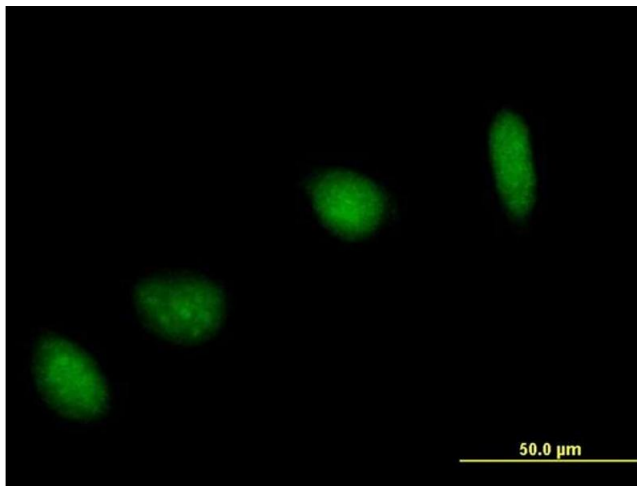


Western Blotting

Image 2. Western Blot analysis of UBE2V1 expression in transfected 293T cell line by UBE2V1 MaxPab polyclonal antibody.

Lane 1: UBE2V1 transfected lysate(16.28 kDa).

Lane 2: Non-transfected lysate.



Immunofluorescence

Image 3. Immunofluorescence of purified MaxPab antibody to UBE2V1 on HeLa cell. [antibody concentration 10 ug/ml]

Please check the [product details page](#) for more images. Overall 4 images are available for ABIN521219.