

Datasheet for ABIN521241
anti-SCGB1A1 antibody (AA 22-91)

3 Images

[Go to Product page](#)

Overview

Quantity:	100 µg
Target:	SCGB1A1
Binding Specificity:	AA 22-91
Reactivity:	Human
Host:	Mouse
Clonality:	Monoclonal
Conjugate:	This SCGB1A1 antibody is un-conjugated
Application:	Western Blotting (WB), ELISA

Product Details

Purpose:	Mouse monoclonal antibody raised against a full-length recombinant SCGB1A1.
Immunogen:	SCGB1A1 (AAH04481, 22 a.a. ~ 91 a.a) full-length recombinant protein with GST tag. MW of the GST tag alone is 26 KDa.
Sequence:	EICPSFQRVI ETLLMDTPSS YEAAMELFSP DQDMREAGAQ LKKLVDTLPQ KPRESIIKLM EKIAQSSLCN
Clone:	1F7
Isotype:	IgG2a
Cross-Reactivity:	Human
Characteristics:	Antibody Reactive Against Recombinant Protein.

Target Details

Target:	SCGB1A1
Alternative Name:	SCGB1A1 (SCGB1A1 Products)
Background:	Full Gene Name: secretoglobin, family 1A, member 1 (uteroglobin) Synonyms: CC10,CC16,CCSP,UGB
Gene ID:	7356

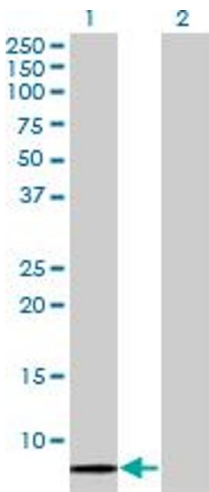
Application Details

Application Notes:	Optimal working dilution should be determined by the investigator.
Restrictions:	For Research Use only

Handling

Buffer:	In 1x PBS, pH 7.4
Handling Advice:	Aliquot to avoid repeated freezing and thawing.
Storage:	-20 °C
Storage Comment:	Store at -20°C or lower. Aliquot to avoid repeated freezing and thawing.

Images



Western Blotting

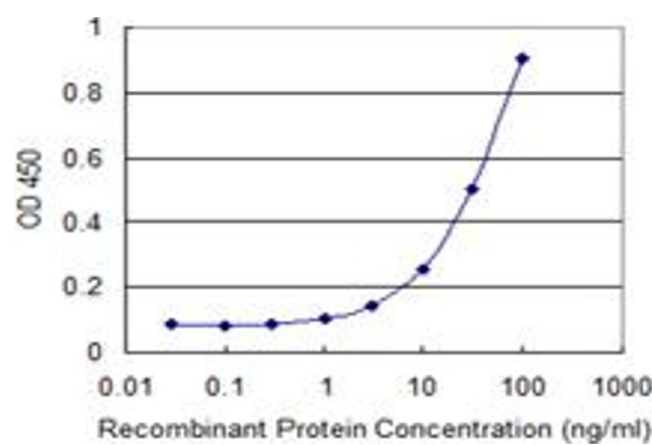
Image 1. Western Blot analysis of SCGB1A1 expression in transfected 293T cell line by SCGB1A1 monoclonal antibody (M11), clone 1F7.

Lane 1: SCGB1A1 transfected lysate(10 KDa).

Lane 2: Non-transfected lysate.

ELISA

Image 2. Detection limit for recombinant GST tagged SCGB1A1 is 1 ng/ml as a capture antibody.



Western Blotting

Image 3. Western Blot detection against Immunogen (33.44 KDa) .

