

Datasheet for ABIN521296
anti-VASP antibody (AA 1-380)



[Go to Product page](#)

2 Images

Overview

Quantity:	100 µg
Target:	VASP
Binding Specificity:	AA 1-380
Reactivity:	Human
Host:	Rabbit
Clonality:	Polyclonal
Conjugate:	This VASP antibody is un-conjugated
Application:	Western Blotting (WB), Proximity Ligation Assay (PLA)

Product Details

Purpose:	Rabbit polyclonal antibody raised against a full-length human VASP protein.
Immunogen:	VASP (AAH38224.1, 1 a.a. ~ 380 a.a) full-length human protein.
Sequence:	MSETVICSSR ATVMLYDDGN KRWLPA GTGP QAFSRVQIYH NPTANSFRV V GRKM QPDQQV VINCAIVRGV KYNQATPNFH QWRDARQVWG LNFGSKEDAA QFAAGMASAL EALEGGGPPPP PPALPTWSVP NGPSPEEVEQ QKRQ QPGPSE HIERRVSNAG GPPAPPAGGP PPPPGPPPPP GPPPPPGPLPP SGVPAAAHGA GGGPPAPPL PAAQGP GGGG AGAPGLAAAI AGAKLRKVSK QEEASGGPTA PKAESGRSGG GGLMEEMNAM LARRRKATQV GEKTPKDESA NQEEPEARVP AQSESVRRPW EKNSTTLPRM KSSSSVTTSE TQPCTPSSSD YSDLQRVKQE LLEE VKKELQ KVKEEII EAF VQELRKR GSP
Cross-Reactivity:	Human
Characteristics:	Antibody reactive against mammalian transfected lysate.

Target Details

Target:	VASP
Alternative Name:	VASP (VASP Products)
Background:	Full Gene Name: vasodilator-stimulated phosphoprotein Synonyms:
Gene ID:	7408
NCBI Accession:	NM_003370
Pathways:	TCR Signaling , Regulation of Actin Filament Polymerization , Tube Formation

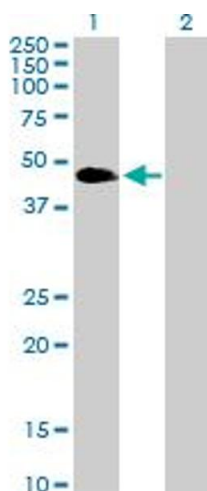
Application Details

Application Notes:	Optimal working dilution should be determined by the investigator.
Restrictions:	For Research Use only

Handling

Buffer:	In 1x PBS, pH 7.4
Handling Advice:	Aliquot to avoid repeated freezing and thawing.
Storage:	-20 °C
Storage Comment:	Store at -20°C or lower. Aliquot to avoid repeated freezing and thawing.

Images

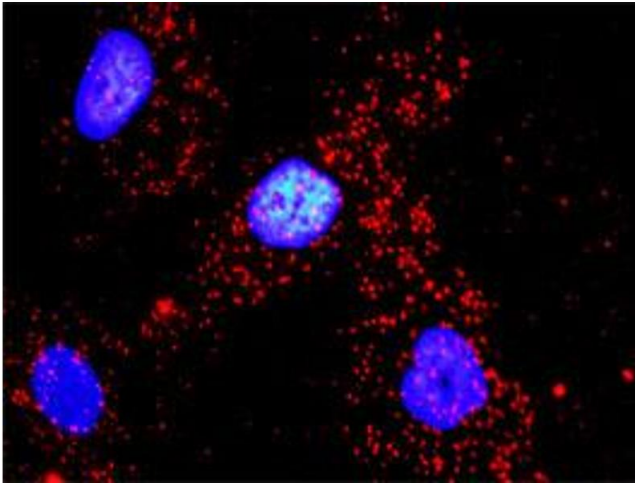


Western Blotting

Image 1. Western Blot analysis of VASP expression in transfected 293T cell line by VASP MaxPab polyclonal antibody.

Lane 1: VASP transfected lysate(39.80 KDa).

Lane 2: Non-transfected lysate.



Proximity Ligation Assay

Image 2. Proximity Ligation Analysis of protein-protein interactions between VASP and ACTG1. HeLa cells were stained with anti-VASP rabbit purified polyclonal 1:1200 and anti-ACTG1 mouse monoclonal antibody 1:50. Each red dot represents the detection of protein-protein interaction complex, and nuclei were counterstained with DAPI (blue).