

Datasheet for ABIN521325
anti-VEGFB antibody (AA 1-207)

2 Images

[Go to Product page](#)

Overview

| | |
|----------------------|-------------------------------------------------------|
| Quantity: | 100 µg |
| Target: | VEGFB |
| Binding Specificity: | AA 1-207 |
| Reactivity: | Human |
| Host: | Rabbit |
| Clonality: | Polyclonal |
| Conjugate: | This VEGFB antibody is un-conjugated |
| Application: | Western Blotting (WB), Proximity Ligation Assay (PLA) |

Product Details

| | |
|-------------------|-----------------------------------------------------------------------------------------------------------------------------------------------------------------------------------------------------------------------------------------------|
| Purpose: | Rabbit polyclonal antibody raised against a full-length human VEGFB protein. |
| Immunogen: | VEGFB (NP_003368.1, 1 a.a. ~ 207 a.a) full-length human protein. |
| Sequence: | MSPLLRRLLL AALLQLAPAQ APVSQPDAPG HQRKVVSVID VYTRATCQPR EVVVPLTVEL MGTVAKQLVP SCVTVQRCGG CCPDDGLECV PTGQHQVRMQ ILMIRYPSSQ LGEMSLEEHS QCECRPKKKD SAVKPDRAAT PHHRPQPRSV PGWDSAPGAP SPADITHPTP APGPSAHAAP STTSALTPGP AAAAADAAAAS SVAKGGA |
| Cross-Reactivity: | Human |
| Characteristics: | Antibody reactive against mammalian transfected lysate. |

Target Details

| | |
|---------|-------|
| Target: | VEGFB |
|---------|-------|

Target Details

| | |
|-------------------|------------------------------------------------------------------------------------------------------------------------------------------|
| Alternative Name: | VEGFB (VEGFB Products) |
| Background: | Full Gene Name: vascular endothelial growth factor B Synonyms: VEGFL,VRF |
| Gene ID: | 7423 |
| NCBI Accession: | NM_003377 |
| Pathways: | RTK Signaling , Signaling Events mediated by VEGFR1 and VEGFR2 , VEGFR1 Specific Signals |

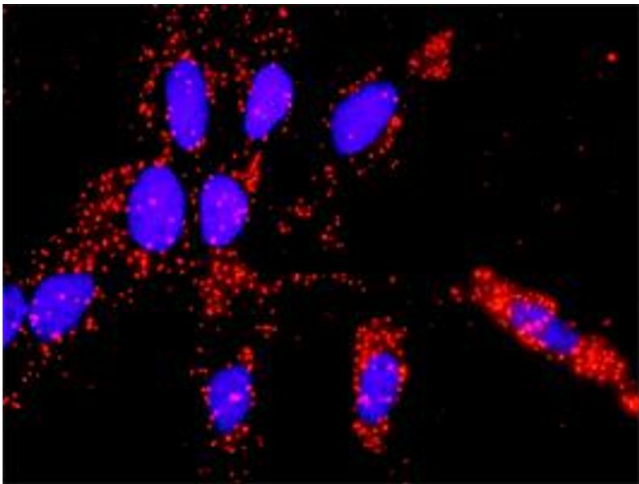
Application Details

| | |
|--------------------|--------------------------------------------------------------------|
| Application Notes: | Optimal working dilution should be determined by the investigator. |
| Restrictions: | For Research Use only |

Handling

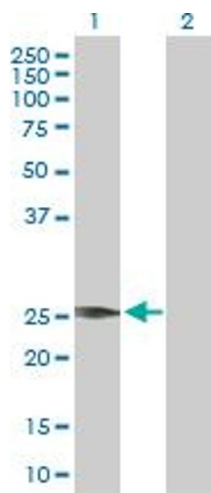
| | |
|------------------|--------------------------------------------------------------------------|
| Buffer: | In 1x PBS, pH 7.4 |
| Handling Advice: | Aliquot to avoid repeated freezing and thawing. |
| Storage: | -20 °C |
| Storage Comment: | Store at -20°C or lower. Aliquot to avoid repeated freezing and thawing. |

Images



Proximity Ligation Assay

Image 1. Proximity Ligation Analysis of protein-protein interactions between VEGFB and VEGFA. HeLa cells were stained with anti-VEGFB rabbit purified polyclonal 1:1200 and anti-VEGFA mouse monoclonal antibody 1:50. Each red dot represents the detection of protein-protein interaction complex, and nuclei were counterstained with DAPI (blue).



Western Blotting

Image 2. Western Blot analysis of VEGFB expression in transfected 293T cell line by VEGFB MaxPab polyclonal antibody.

Lane 1: VEGFB transfected lysate(21.60 KDa).

Lane 2: Non-transfected lysate.