

Datasheet for ABIN521384  
**anti-WNT5A antibody (AA 1-380)**[Go to Product page](#)

## 2 Images

## Overview

Quantity:	100 µg
Target:	WNT5A
Binding Specificity:	AA 1-380
Reactivity:	Human
Host:	Rabbit
Clonality:	Polyclonal
Conjugate:	This WNT5A antibody is un-conjugated
Application:	Western Blotting (WB), Proximity Ligation Assay (PLA)

## Product Details

Purpose:	Rabbit polyclonal antibody raised against a full-length human WNT5A protein.
Immunogen:	WNT5A (NP_003383.2, 1 a.a. ~ 380 a.a) full-length human protein.
Sequence:	MKKSIGILSP GVALGMAGSA MSSKFFLVAL AIFFSFAQVV IEANSWWSLG MNNPVQMSEV YIIGAQLPCS QLAGLSQGQK KLCHLYQDHM QYIGEGAKTG IKECQYQFRH RRWNCSTVDN TSVFGRVMQI GSRETAFTYA VSAAGVVNAM SRACREGELS TCGCSRAARP KDLPRDWLWG GCGDNIDYGY RFAKEFVDAR ERERIHAKGS YESARILMNL HNNEAGRRTV YNLADVACKC HGVSGSCSLK TCWLQLADFR KVGDALKEY DSAAAMRLNS RGKLVQVNSR FNSPTTQDLV YIDPSPDYCV RNESTGSLGT QGRLCNKTSE GMDGCELMCC GRGYDQFKTV QTERCHCKFH WCCYVKCKKC TEIVDQFVCK
Cross-Reactivity:	Human
Characteristics:	Antibody reactive against mammalian transfected lysate.

## Target Details

Target:	WNT5A
Alternative Name:	WNT5A ( <a href="#">WNT5A Products</a> )
Background:	Full Gene Name: wingless-type MMTV integration site family, member 5A Synonyms: hWNT5A
Gene ID:	7474
NCBI Accession:	<a href="#">NM_003392</a>
Pathways:	<a href="#">WNT Signaling</a> , <a href="#">Cellular Response to Molecule of Bacterial Origin</a> , <a href="#">Positive Regulation of Immune Effector Process</a> , <a href="#">Production of Molecular Mediator of Immune Response</a> , <a href="#">Regulation of Cell Size</a> , <a href="#">Tube Formation</a>

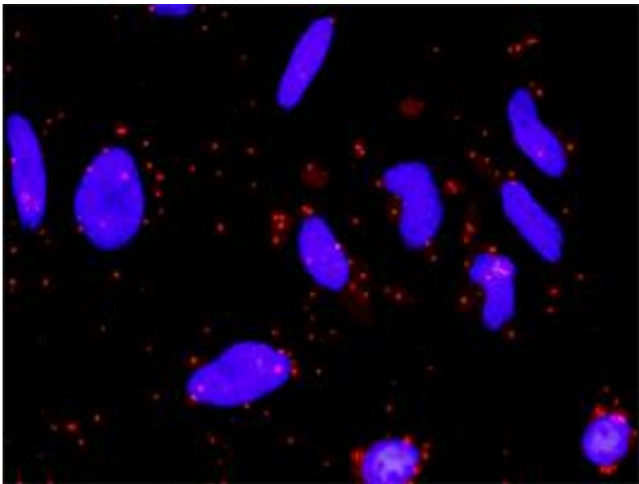
## Application Details

Application Notes:	Optimal working dilution should be determined by the investigator.
Restrictions:	For Research Use only

## Handling

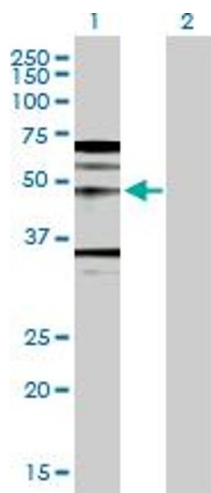
Buffer:	In 1x PBS, pH 7.4
Handling Advice:	Aliquot to avoid repeated freezing and thawing.
Storage:	-20 °C
Storage Comment:	Store at -20°C or lower. Aliquot to avoid repeated freezing and thawing.

## Images



### Proximity Ligation Assay

**Image 1.** Proximity Ligation Analysis of protein-protein interactions between WNT5A and FZD5. HeLa cells were stained with anti-WNT5A rabbit purified polyclonal 1:1200 and anti-FZD5 mouse monoclonal antibody 1:50. Each red dot represents the detection of protein-protein interaction complex, and nuclei were counterstained with DAPI (blue).



Western Blotting

**Image 2.** Western Blot analysis of WNT5A expression in transfected 293T cell line by WNT5A MaxPab polyclonal antibody.

Lane 1: WNT5A transfected lysate(42.30 KDa).

Lane 2: Non-transfected lysate.