



[Go to Product page](#)

Datasheet for ABIN521387

## anti-WNT6 antibody (AA 1-365)

### 1 Image

#### Overview

|                      |                                     |
|----------------------|-------------------------------------|
| Quantity:            | 100 µg                              |
| Target:              | WNT6                                |
| Binding Specificity: | AA 1-365                            |
| Reactivity:          | Human                               |
| Host:                | Rabbit                              |
| Clonality:           | Polyclonal                          |
| Conjugate:           | This WNT6 antibody is un-conjugated |
| Application:         | Western Blotting (WB)               |

#### Product Details

|                   |   |
|-------------------|---|
| Purpose:          | Rabbit polyclonal antibody raised against a full-length human WNT6 protein.   |
| Immunogen:        | WNT6 (NP_006513.1, 1 a.a. ~ 365 a.a) full-length human protein.   |
| Sequence:         | MLPPLPSRLG LLLLLLLCPA HVGGLWWAVG SPLVMDPTSI CRKARRLAGR QAELCQAEPE<br>VVAELARGAR LGVRECQFQF RFRRWNCSSH SKAFGRILQQ DIRETAFVFA ITAAGASHAV<br>TQACSMGELL QCGCQAPRGR APPRPSGLPG TPGPPGPAGS PEGSAAWEWG GCGDDVDFGD<br>EKSRLFMDAR HKRGRGDIRA LVQLHNNEAG RLAVRSHTRT ECKCHGLSGS CALRTCWQKL<br>PPFREVGARL LERFHGASRV MGTNDGKALL PAVRTLKPPG RADLLYAADS PDFCAPNRRRT<br>GSPGTRGRAC NSSAPDLSGC DLLCCGRGHR QESVQLEENC LCRFWCCVW QCHRCRVRKE<br>LSLCL |
| Cross-Reactivity: | Human   |
| Characteristics:  | Antibody reactive against mammalian transfected lysate.   |

## Target Details

|                   |   |
|-------------------|---|
| Target:           | WNT6  |
| Alternative Name: | WNT6 ( <a href="#">WNT6 Products</a> )  |
| Background:       | Full Gene Name: wingless-type MMTV integration site family, member 6<br>Synonyms: |
| Gene ID:          | 7475  |
| NCBI Accession:   | <a href="#">NM_006522</a>   |
| Pathways:         | <a href="#">WNT Signaling, Tube Formation</a>                                     |

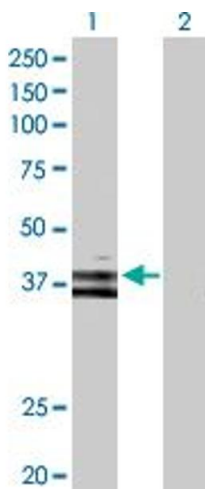
## Application Details

|                    |  |
|--------------------|--|
| Application Notes: | Optimal working dilution should be determined by the investigator. |
| Restrictions:      | For Research Use only  |

## Handling

|                  |  |
|------------------|--|
| Buffer:          | In 1x PBS, pH 7.4  |
| Handling Advice: | Aliquot to avoid repeated freezing and thawing.                          |
| Storage:         | -20 °C   |
| Storage Comment: | Store at -20°C or lower. Aliquot to avoid repeated freezing and thawing. |

## Images



### Western Blotting

**Image 1.** Western Blot analysis of WNT6 expression in transfected 293T cell line by WNT6 MaxPab polyclonal antibody.

Lane 1: WNT6 transfected lysate(39.70 kDa).

Lane 2: Non-transfected lysate.