



[Go to Product page](#)

Datasheet for ABIN521403

anti-WT1 antibody (AA 349-439)

3 Images

Overview

Quantity:	100 µg
Target:	WT1
Binding Specificity:	AA 349-439
Reactivity:	Human
Host:	Mouse
Clonality:	Monoclonal
Conjugate:	This WT1 antibody is un-conjugated
Application:	Western Blotting (WB), ELISA

Product Details

Purpose:	Mouse monoclonal antibody raised against a full length recombinant WT1.
Immunogen:	WT1 (NP_000369.3, 349 a.a. ~ 439 a.a) full-length recombinant protein with GST tag. MW of the GST tag alone is 26 KDa.
Sequence:	QDVRRVPGVA PTLVRSASET SEKRPFMCAY PGCNKRYFKL SHLQMHSRKH TGEKPYQCDF KDCERRFSRS DQLKRHQRRH TGVKPFQCKT C
Clone:	3B12
Isotype:	IgG2a
Cross-Reactivity:	Human
Characteristics:	Antibody Reactive Against Recombinant Protein.

Target Details

Target:	WT1
Alternative Name:	WT1 (WT1 Products)
Background:	Full Gene Name: Wilms tumor 1 Synonyms: GUD,WAGR,WIT-2,WT33
Gene ID:	7490
NCBI Accession:	NM_000378
Pathways:	Tube Formation

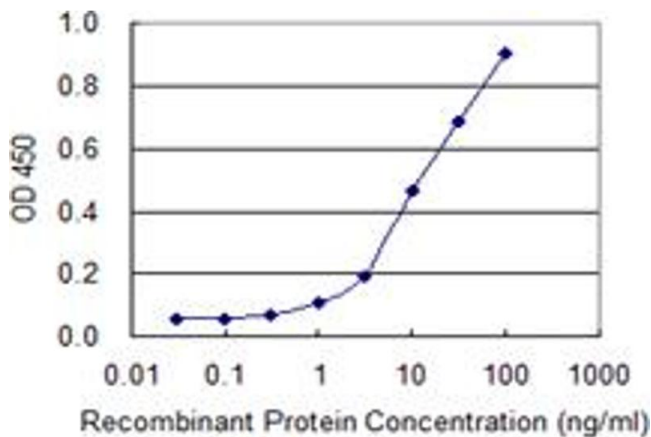
Application Details

Application Notes:	Optimal working dilution should be determined by the investigator.
Restrictions:	For Research Use only

Handling

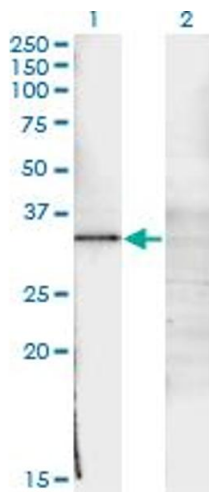
Buffer:	In 1x PBS, pH 7.4
Handling Advice:	Aliquot to avoid repeated freezing and thawing.
Storage:	-20 °C
Storage Comment:	Store at -20°C or lower. Aliquot to avoid repeated freezing and thawing.

Images



ELISA

Image 1. Detection limit for recombinant GST tagged WT1 is 0.3 ng/ml as a capture antibody.

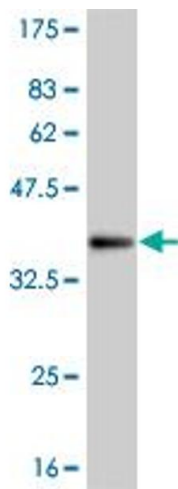


Western Blotting

Image 2. Western Blot analysis of WT1 expression in transfected 293T cell line by WT1 monoclonal antibody (M02), clone 3B12.

Lane 1: WT1 transfected lysate(34.5 KDa).

Lane 2: Non-transfected lysate.



Western Blotting

Image 3. Western Blot detection against Immunogen (35.64 KDa).