

Datasheet for ABIN521422
anti-XRCC1 antibody (AA 1-633)



[Go to Product page](#)

3 Images

Overview

Quantity:	50 µg
Target:	XRCC1
Binding Specificity:	AA 1-633
Reactivity:	Human
Host:	Mouse
Clonality:	Polyclonal
Conjugate:	This XRCC1 antibody is un-conjugated
Application:	Western Blotting (WB), Immunofluorescence (IF), Immunohistochemistry (Paraffin-embedded Sections) (IHC (p))

Product Details

Purpose:	Mouse polyclonal antibody raised against a full-length human XRCC1 protein.
Immunogen:	XRCC1 (AAH23593.1, 1 a.a. ~ 633 a.a) full-length human protein.
Sequence:	MPEIRLRHVV SCSSQDSTHC AENLLKADTY RKWRAAKAGE KTISVVLQLE KEEQIHSVDI GNDGSAFVEV LVGSSAGGAG EQDYEVLLVT SSFMSPSESR SGSNPNRVRM FGPDKLVRAA AEKRWDRVKI VCSQPYSKDS PFGLSFVRFH SPPDKDEAEA PSQKVTVTKL GQFRVKEEDE SANSLRPGAL FFSRINKTSP VTASDPAGPS YAAATLQASS AASSASPVSR AIGSTSKPQE SPKGKRKLDL NQEEKKTPSK PPAQLSPSVP KRPKLPAPTR TPATAPVPAR AQGAVTGKPR GEGTEPRRPR AGPEELGKIL QGVVVVLSGF QNPFSELRD KALELGAKYR PDWTRDSTHL ICAFANTPKY SQVLGLGGRI VRKEWVLDCH RMRRRLPSQR YLMAGPGSSS EEDEASHSGG SGDEAPKLPQ KQPQTKTKPT QAAGPSSPQK PPTPEETKAA SPVLQEDIDI EGVQSEGQDN GAEDSGDTEG ELRRVAEQKE HRLPPGQEEN GEDPYAGSTD ENTDSEEHQE PPDLVPPELP

Product Details

DDFQGKHFFL YGEFPGDERR KLIRYVTA FN GELEDYMSDR VQFVITAQEW DPSFEEALMD
NPSLAFVRPR WIYSCNEKQK LLPHQLYGVV PQA

Cross-Reactivity: Human

Characteristics: Antibody reactive against mammalian transfected lysate.

Target Details

Target: XRCC1

Alternative Name: XRCC1 ([XRCC1 Products](#))

Background: Full Gene Name: X-ray repair complementing defective repair in Chinese hamster cells 1
Synonyms: RCC

Gene ID: 7515

Pathways: [DNA Damage Repair](#)

Application Details

Application Notes: Optimal working dilution should be determined by the investigator.

Restrictions: For Research Use only

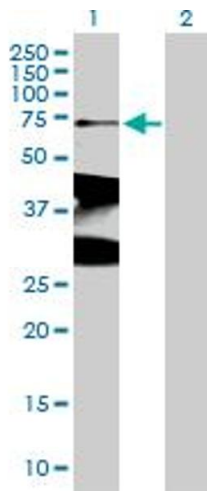
Handling

Buffer: In 1x PBS, pH 7.4

Handling Advice: Aliquot to avoid repeated freezing and thawing.

Storage: -20 °C

Storage Comment: Store at -20°C or lower. Aliquot to avoid repeated freezing and thawing.

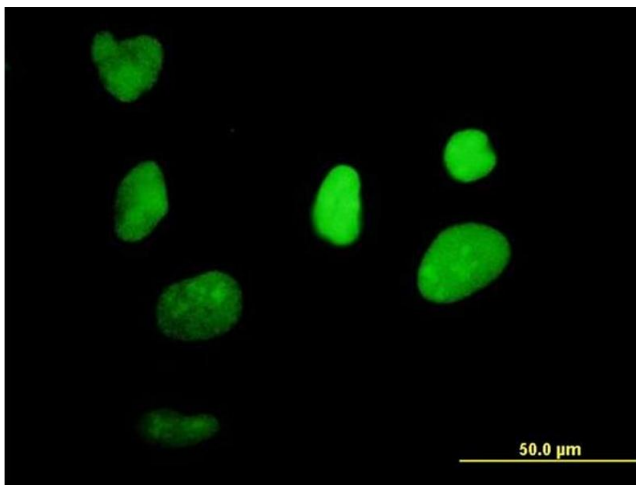


Western Blotting

Image 1. Western Blot analysis of XRCC1 expression in transfected 293T cell line by XRCC1 MaxPab polyclonal antibody.

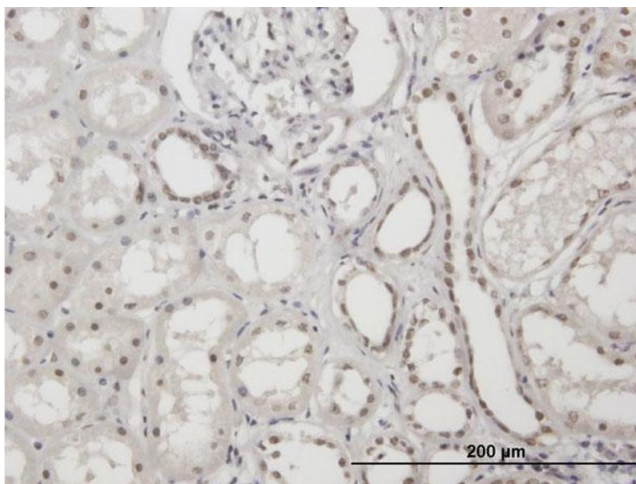
Lane 1: XRCC1 transfected lysate(69.63 KDa).

Lane 2: Non-transfected lysate.



Immunofluorescence

Image 2. Immunofluorescence of purified MaxPab antibody to XRCC1 on HeLa cell. [antibody concentration 10 ug/ml]



Immunostaining

Image 3. Immunoperoxidase of purified MaxPab antibody to XRCC1 on formalin-fixed paraffin-embedded human kidney. [antibody concentration 3 ug/ml]