



## Datasheet for ABIN521434 anti-YES1 antibody (AA 1-543)



[Go to Product page](#)

### 1 Image

#### Overview

Quantity:	50 µL
Target:	YES1
Binding Specificity:	AA 1-543
Reactivity:	Human
Host:	Mouse
Clonality:	Polyclonal
Conjugate:	This YES1 antibody is un-conjugated
Application:	Western Blotting (WB)

#### Product Details

Purpose:	Mouse polyclonal antibody raised against a full-length human YES1 protein.
Immunogen:	YES1 (NP_005424.1, 1 a.a. ~ 543 a.a) full-length human protein.
Sequence:	MGCIKSKENK SPAIKYRPN TPEPVSTSVS HYGAEPPTVS PCPSSSAKGT AVNFSSLSMT PFGGSSGVTP FGGASSFSV VPSSYPAGLT GGVTIFVALY DYEARTTEDL SFKKGERFQI INNTEGDWWE ARSIATGKNG YIPSNYVAPA DSIQAEWYF GKMGRKDAER LLLNPGNQRG IFLVRESETT KGAYLSIRD WDEIRGDNVK HYKIRKLDNG GYYITTRAQF DTLQKLVKHY TEHADGLCHK LTTVCPTVKP QTQGLAKDAW EIPRESLRLE VKLGQGCFCGE VWMGTWNGTT KVAIKTLKPG TMMPEAFLQE AQIMKKLRHD KLVPLYAVVS EEPIYIVTEF MSKGSLLDFL KEGDGKYLKL PQLVDMAAQI ADGMAYIERM NYIHRDLRAA NILVGENLVC KIADFGRLARL IEDNEYTARQ GAKFPIKWTA PEAALYGRFT IKSDVWSFGI LQTELVTKGR VPYPGMVNRE VLEQVERGYR MPCPQGCPES LHELMNLCWK KDPDERPTFE YIQSFLEDYF TATEPQYQPG ENL

## Product Details

---

Cross-Reactivity:	Human
Characteristics:	Antibody reactive against mammalian transfected lysate.

## Target Details

---

Target:	YES1
Alternative Name:	YES1 ( <a href="#">YES1 Products</a> )
Background:	Full Gene Name: v-yes-1 Yamaguchi sarcoma viral oncogene homolog 1 Synonyms: HsT441,P61-YES,Yes,c-yes
Gene ID:	7525
NCBI Accession:	<a href="#">NM_005433</a>
Pathways:	<a href="#">CXCR4-mediated Signaling Events</a> , <a href="#">Signaling Events mediated by VEGFR1 and VEGFR2</a> , <a href="#">Thromboxane A2 Receptor Signaling</a>

## Application Details

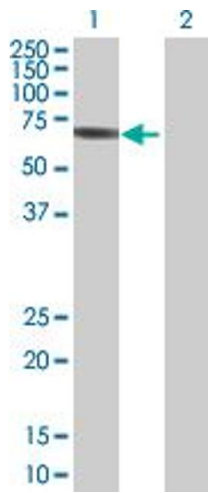
---

Application Notes:	Optimal working dilution should be determined by the investigator.
Restrictions:	For Research Use only

## Handling

---

Format:	Liquid
Buffer:	No additive
Preservative:	Without preservative
Handling Advice:	Aliquot to avoid repeated freezing and thawing.
Storage:	-20 °C
Storage Comment:	Store at -20°C or lower. Aliquot to avoid repeated freezing and thawing.



### Western Blotting

**Image 1.** Western Blot analysis of YES1 expression in transfected 293T cell line by YES1 MaxPab polyclonal antibody.

Lane 1: YES1 transfected lysate(59.73 KDa).

Lane 2: Non-transfected lysate.