



[Go to Product page](#)

Datasheet for ABIN521436
anti-YES1 antibody (AA 1-543)

1 Image

Overview

Quantity:	100 µL
Target:	YES1
Binding Specificity:	AA 1-543
Reactivity:	Human
Host:	Rabbit
Clonality:	Polyclonal
Conjugate:	This YES1 antibody is un-conjugated
Application:	Immunoprecipitation (IP)

Product Details

Purpose:	Rabbit polyclonal antibody raised against a full-length human YES1 protein.
Immunogen:	YES1 (NP_005424.1, 1 a.a. ~ 543 a.a) full-length human protein.
Sequence:	MGCIKSKENK SPAIKYR PEN TPEPVSTSVS HYGAEPPTVS PCPSSSAKGT AVNFSSLSMT PFGGSSGVTP FGGASSFSV VPSSYPAGLT GGVTIFVALY DYEARTTEDL SFKKGERFQI INNTEGDWWE ARSIATGKNG YIPSNYVAPA DSIQAEWYF GKMGRKDAER LLLNPGNQRG IFLVRESETT KGAYLSIRD WDEIRGDNVK HYKIRKLDNG GYYITTRAQF DTLQKLVKHY TEHADGLCHK LTTVCPTVKP QTQGLAKDAW EIPRESLRLE VKLGQGCFGE VWMGTWNGTT KVAIKTLKPG TMMPEAFLQE AQIMKKLRHD KLVPLYAVVS EEPIYIVTEF MSKGSLLDFL KEGDGKYLKL PQLVDMAAQI ADGMAYIERM NYIHRDLRAA NILVGENLVC KIA DFGLARL IEDNEY TARQ GAKFPIKWTA PEAALYGRFT IKSDVWSFGI LQTELVTKGR VPYPGMVNRE VLEQVERGYR MPCPQGCPES LHELMNLCWK KDPDERPTFE YIQSFLEDYF TATEPQYQPG ENL

Product Details

Cross-Reactivity:	Human
Characteristics:	Antibody reactive against mammalian transfected lysate.

Target Details

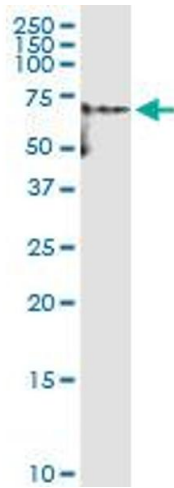
Target:	YES1
Alternative Name:	YES1 (YES1 Products)
Background:	Full Gene Name: v-yes-1 Yamaguchi sarcoma viral oncogene homolog 1 Synonyms: HsT441,P61-YES,Yes,c-yes
Gene ID:	7525
NCBI Accession:	NM_005433
Pathways:	CXCR4-mediated Signaling Events , Signaling Events mediated by VEGFR1 and VEGFR2 , Thromboxane A2 Receptor Signaling

Application Details

Application Notes:	Optimal working dilution should be determined by the investigator.
Restrictions:	For Research Use only

Handling

Format:	Liquid
Buffer:	No additive
Preservative:	Without preservative
Handling Advice:	Aliquot to avoid repeated freezing and thawing.
Storage:	-20 °C
Storage Comment:	Store at -20°C or lower. Aliquot to avoid repeated freezing and thawing.



Immunoprecipitation

Image 1. Immunoprecipitation of YES1 transfected lysate using anti-YES1 MaxPab rabbit polyclonal antibody and Protein A Magnetic Bead , and immunoblotted with YES1 MaxPab mouse polyclonal antibody (B01) .