

Datasheet for ABIN521443  
**anti-YWHAB antibody (AA 1-246)**



[Go to Product page](#)

1 Image

## Overview

Quantity:	200 µL
Target:	YWHAB
Binding Specificity:	AA 1-246
Reactivity:	Human
Host:	Mouse
Clonality:	Monoclonal
Conjugate:	This YWHAB antibody is un-conjugated
Application:	Western Blotting (WB), ELISA

## Product Details

Purpose:	Mouse monoclonal antibody raised against a full-length recombinant YWHAB.
Immunogen:	YWHAB (AAH01359, 1 a.a. ~ 246 a.a) full-length recombinant protein with GST tag. MW of the GST tag alone is 26 KDa.
Sequence:	MTMDKSELVQ KAKLAEQAER YDDMAAAMKA VTEQGHESLN EERNLLSVAY KNVVGARRSS WRVISSIEQK TERNEERQQM GKEYREKIEA ELQDICNDVL ELLDKYLIPN ATQPESKVFY LKMKGDYFRY LSEVASGDNK QTTVSNSQQA YQEAFEISKK EMQPTHPIRL GLALNFSVFY YEILNSPEKA CSLAKTAFDE AIAELDTLNE ESYKDSTLIM QLLRDNLTLW TSENQGDEGD AGEGEN
Clone:	1F11
Isotype:	IgM kappa
Cross-Reactivity:	Human

## Target Details

---

Target:	YWHAB
Alternative Name:	YWHAB ( <a href="#">YWHAB Products</a> )
Background:	Full Gene Name: tyrosine 3-monooxygenase/tryptophan 5-monooxygenase activation protein, beta polypeptide Synonyms: GW128,HS1,KCIP-1
Gene ID:	7529
Pathways:	<a href="#">Fc-epsilon Receptor Signaling Pathway</a> , <a href="#">EGFR Signaling Pathway</a> , <a href="#">Neurotrophin Signaling Pathway</a> , <a href="#">Myometrial Relaxation and Contraction</a> , <a href="#">Maintenance of Protein Location</a>

## Application Details

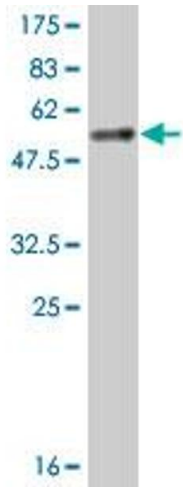
---

Application Notes:	Optimal working dilution should be determined by the investigator.
Comment:	Product Quality tested by: Antibody Reactive Against Recombinant Protein.
Restrictions:	For Research Use only

## Handling

---

Format:	Liquid
Buffer:	In ascites fluid
Handling Advice:	Aliquot to avoid repeated freezing and thawing.
Storage:	-20 °C
Storage Comment:	Store at -20°C or lower. Aliquot to avoid repeated freezing and thawing.



### Western Blotting

**Image 1.** Western Blot detection against Immunogen (52.8 kDa) .