



[Go to Product page](#)

Datasheet for ABIN521523
anti-ZBTB25 antibody (AA 1-435)

2 Images

Overview

Quantity:	50 µL
Target:	ZBTB25
Binding Specificity:	AA 1-435
Reactivity:	Human
Host:	Mouse
Clonality:	Polyclonal
Conjugate:	This ZBTB25 antibody is un-conjugated
Application:	Western Blotting (WB), Immunofluorescence (IF)

Product Details

Purpose:	Mouse polyclonal antibody raised against a full-length human ZBTB25 protein.
Immunogen:	ZBTB25 (NP_008908.2, 1 a.a. ~ 435 a.a) full-length human protein.
Sequence:	MDTASHSLVL LQQLNMQREF GFLCDCTVAI GDVYFKAHRA VLAAFSNYFK MIFIHQTSEC IKIQPTDIQP DIFSYPYLLHIM YTGKGPQKIV DHSRLEEGIR FLHADYLSHI ATEMNQVFSP ETVQSSNLYG IQISTTQKTV VKQGLEVKEA PSSNSGNRAA VQGDHPQLQL SLAIGLDDGT ADQQRACPAT QALEEHQKPP VSIKQERCDP ESVISQSHPS PSSEVTGPTF TENSVKIHLC HYCGERFDSR SNLRQHLHTH VSGSLPFGVP ASILESNDLG EVHPLNENSE ALECRRLSSF IVKENEQQPD HTNRGTTEPL QISQVSLISK DTEPVELNCN FSFSRKRKMS CTICGHKFPR KSQLEHMYT HKGKSYRYNR CQRFGNALAQ RFQPYCDSWS DVSLKSSRLS QEHLDLPCAL ESELQENVD TILVE
Cross-Reactivity:	Human

Product Details

Characteristics: Antibody reactive against mammalian transfected lysate.

Target Details

Target: ZBTB25

Alternative Name: ZBTB25 ([ZBTB25 Products](#))

Background: Full Gene Name: zinc finger and BTB domain containing 25
Synonyms: KUP,ZNF46

Gene ID: 7597

NCBI Accession: [NM_006977](#)

Application Details

Application Notes: Optimal working dilution should be determined by the investigator.

Restrictions: For Research Use only

Handling

Format: Liquid

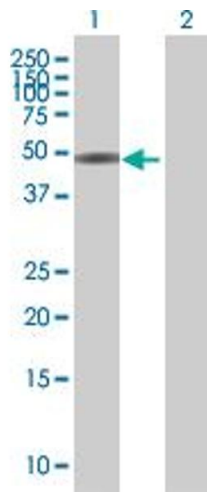
Buffer: No additive

Preservative: Without preservative

Handling Advice: Aliquot to avoid repeated freezing and thawing.

Storage: -20 °C

Storage Comment: Store at -20°C or lower. Aliquot to avoid repeated freezing and thawing.

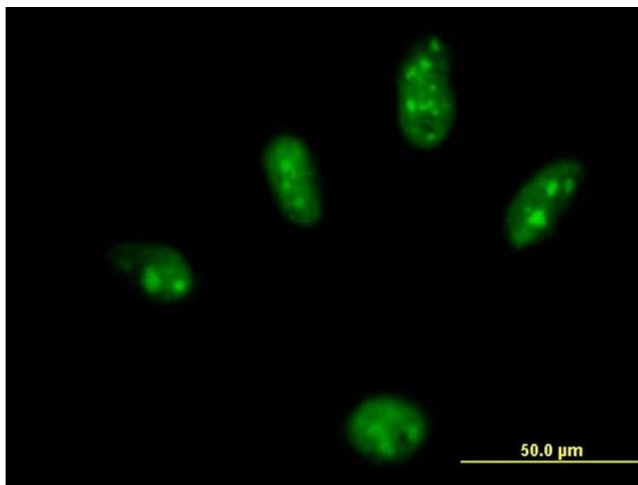


Western Blotting

Image 1. Western Blot analysis of ZBTB25 expression in transfected 293T cell line by ZBTB25 MaxPab polyclonal antibody.

Lane 1: ZBTB25 transfected lysate(47.85 KDa).

Lane 2: Non-transfected lysate.



Immunofluorescence

Image 2. Immunofluorescence of purified MaxPab antibody to ZBTB25 on HeLa cell. [antibody concentration 10 ug/ml]