



[Go to Product page](#)

Datasheet for ABIN521568
anti-PCGF2 antibody (AA 236-294)

3 Images

Overview

Quantity:	100 µg
Target:	PCGF2
Binding Specificity:	AA 236-294
Reactivity:	Human
Host:	Mouse
Clonality:	Monoclonal
Conjugate:	This PCGF2 antibody is un-conjugated
Application:	ELISA, Western Blotting (WB)

Product Details

Purpose:	Mouse monoclonal antibody raised against a partial recombinant PCGF2.
Immunogen:	PCGF2 (AAH04858.1, 236 a.a. ~ 294 a.a) partial recombinant protein with GST tag. MW of the GST tag alone is 26 KDa.
Sequence:	LTLATVPTPS EGTNTSGASE CESVSDKAPS PATLPATSSS LPSPATPSHG SPSSHGPPA
Clone:	4D6
Isotype:	IgG2a
Cross-Reactivity:	Human
Characteristics:	Antibody Reactive Against Recombinant Protein.

Target Details

Target:	PCGF2
Alternative Name:	PCGF2 (PCGF2 Products)
Background:	Full Gene Name: polycomb group ring finger 2 Synonyms: MEL-18,MGC10545,RNF110,ZNF144
Gene ID:	7703
Pathways:	Chromatin Binding

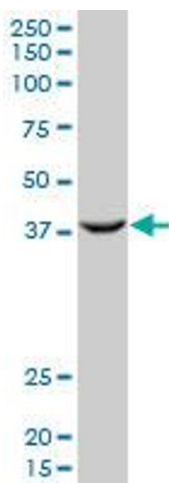
Application Details

Application Notes:	Optimal working dilution should be determined by the investigator.
Restrictions:	For Research Use only

Handling

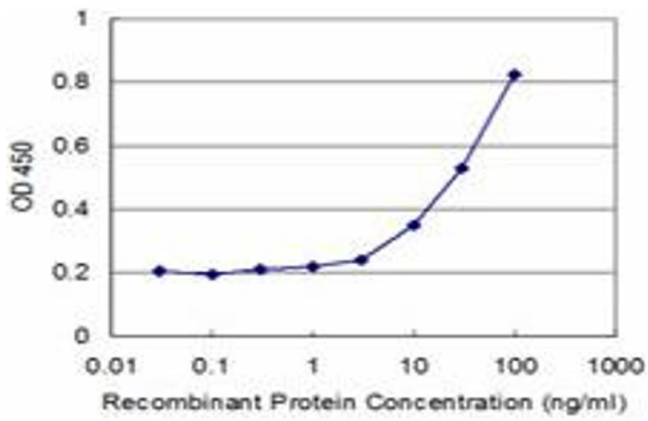
Buffer:	In 1x PBS, pH 7.4
Handling Advice:	Aliquot to avoid repeated freezing and thawing.
Storage:	-20 °C
Storage Comment:	Store at -20°C or lower. Aliquot to avoid repeated freezing and thawing.

Images



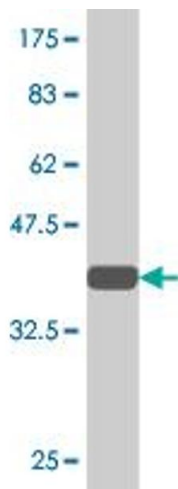
Western Blotting

Image 1. PCGF2 monoclonal antibody (M03), clone 4D6.
Western Blot analysis of PCGF2 expression in human liver.



ELISA

Image 2. Detection limit for recombinant GST tagged PCGF2 is approximately 3ng/ml as a capture antibody.



Western Blotting

Image 3. Western Blot detection against Immunogen (32.23 KDa) .