



[Go to Product page](#)

Datasheet for ABIN521648
anti-CDSE1 antibody (AA 1-767)

1 Image

Overview

Quantity:	50 µg
Target:	CDSE1
Binding Specificity:	AA 1-767
Reactivity:	Human
Host:	Mouse
Clonality:	Polyclonal
Conjugate:	This CDSE1 antibody is un-conjugated
Application:	Western Blotting (WB)

Product Details

Purpose:	Mouse polyclonal antibody raised against a full-length human CSDE1 protein.
Immunogen:	CSDE1 (NP_009089.4, 1 a.a. ~ 767 a.a) full-length human protein.
Sequence:	MSFDPNLLHN NGHNGYPNGT SAALRETGVI EKLLTSYGF I QCSE RQARLF FHCSQYNGNL QDLKVGDDVE FEVSSDRRTG KPIAVKLVKI KQEILPEERM NGQEVFYLT Y TPEDVEGNVQ LETGDKINFV IDNNKHTGAV SARNIMLLKK KQARCQGVVC AMKEAFGFIE RGDVVKEIFF HYSEFKGDLE TLQP GDDVEF TIKDRNGKEV ATDVRLLPQG TVIFEDISIE HFEGTVTKVI PKVPSKNQND PLPGRIKVDF VIPKELPFGD KDTKSKVTLL EGDHVRFNIS TDRRDKLERA TNIEVLSNTF QFTNEAREMG VIAAMRDGFG FIKCVDRDVR MFFHFSEILD GNQLHIADEV EFTVVPDMLS AQRNHAIK KLPKGTVSFH SHSDHRFLGT VEKEATFSNP KTTSPNKGKE KEAEDGIIAY DDCGVKLTIA FQAKDVEGST SPQIGDKVEF SISDKQRPGQ QVATCVRLLG RNSNSKRLLG YVATLKDNFG FIETANHDKE IFFHYSEFSG DVDSLELGDM VEYSLSKGKG NKVSAEKVNK THSVNGITEE ADPTIYSGKV IRPLRSVDPT QTEYQGMIEI VEEGDMKGEV

Product Details

YPFGIVGMAN KGDCLQKGES VKFQLCVLGQ NAQTMAYNIT PLRRATVECV KDQGFIFYE
VGDSKKLFFH VKEVQDGIEL QAGDEVEFSV ILNQRTGKCS ACNVWRVCEG PKAVAAPRPD
RLVNRLKNIT LDDASAPRLM VLRQPRGPDN SMGFGAERKI RQAGVID

Cross-Reactivity: Human

Characteristics: Antibody reactive against mammalian transfected lysate.

Target Details

Target: CDSE1

Alternative Name: CSDE1 ([CDSE1 Products](#))

Background: Full Gene Name: cold shock domain containing E1, RNA-binding
Synonyms: D1S155E,DKFZp779B0247,DKFZp779J1455,FLJ26882,RP5-1000E10.3,UNR

Gene ID: 7812

NCBI Accession: [NM_007158](#)

Pathways: [SARS-CoV-2 Protein Interactome](#)

Application Details

Application Notes: Optimal working dilution should be determined by the investigator.

Restrictions: For Research Use only

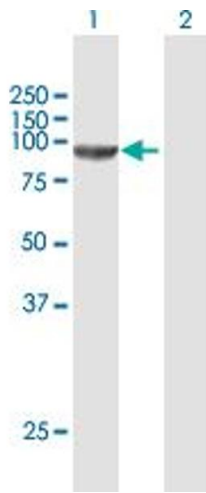
Handling

Buffer: In 1x PBS, pH 7.4

Handling Advice: Aliquot to avoid repeated freezing and thawing.

Storage: -20 °C

Storage Comment: Store at -20°C or lower. Aliquot to avoid repeated freezing and thawing.



Western Blotting

Image 1. Western Blot analysis of CSDE1 expression in transfected 293T cell line by CSDE1 MaxPab polyclonal antibody.

Lane 1: CSDE1 transfected lysate(84.37 KDa).

Lane 2: Non-transfected lysate.