

Datasheet for ABIN521669
anti-IL1R2 antibody (AA 21-120)

3 Images

[Go to Product page](#)

Overview

Quantity:	100 µg
Target:	IL1R2
Binding Specificity:	AA 21-120
Reactivity:	Human
Host:	Mouse
Clonality:	Monoclonal
Conjugate:	This IL1R2 antibody is un-conjugated
Application:	Western Blotting (WB), ELISA, Proximity Ligation Assay (PLA)

Product Details

Purpose:	Mouse monoclonal antibody raised against a partial recombinant IL1R2.
Immunogen:	IL1R2 (NP_004624, 21 a.a. ~ 120 a.a) partial recombinant protein with GST tag. MW of the GST tag alone is 26 KDa.
Sequence:	HTGAARSCRF RGRHYKREFR LEGEPVALRC PQVPYWLWAS VSPRINLTWH KNDSARTVPG EEETRMWAQD GALWLLPALQ EDSGTIVCTT RNASYCDKMS
Clone:	1G12
Isotype:	IgG2a
Cross-Reactivity:	Human
Characteristics:	Antibody Reactive Against Recombinant Protein.

Target Details

Target:	IL1R2
Alternative Name:	IL1R2 (IL1R2 Products)
Background:	Full Gene Name: interleukin 1 receptor, type II Synonyms: CD121b,IL1RB,MGC47725
Gene ID:	7850
NCBI Accession:	NM_004633
Pathways:	NF-kappaB Signaling

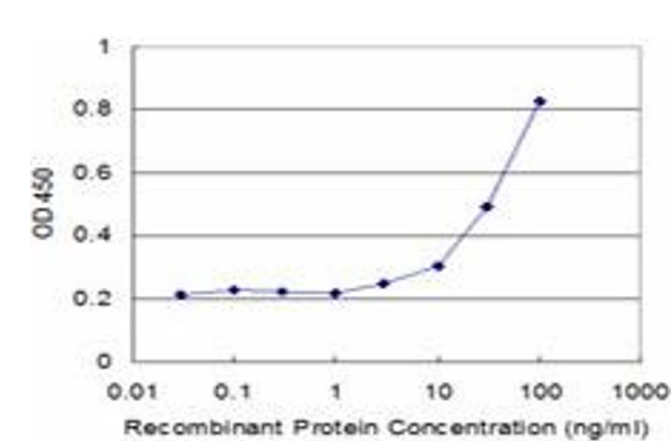
Application Details

Application Notes:	Optimal working dilution should be determined by the investigator.
Restrictions:	For Research Use only

Handling

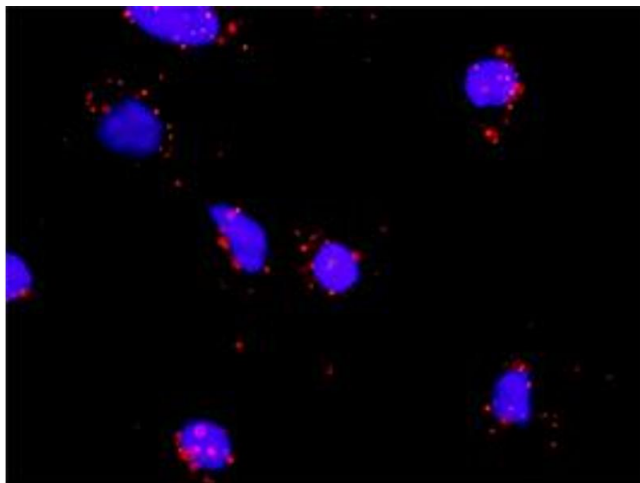
Buffer:	In 1x PBS, pH 7.4
Handling Advice:	Aliquot to avoid repeated freezing and thawing.
Storage:	-20 °C
Storage Comment:	Store at -20°C or lower. Aliquot to avoid repeated freezing and thawing.

Images



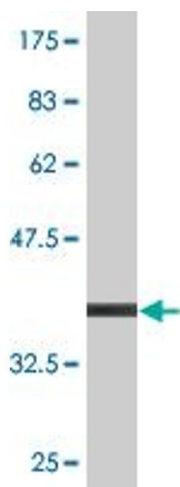
ELISA

Image 1. Detection limit for recombinant GST tagged IL1R2 is approximately 3ng/ml as a capture antibody.



Proximity Ligation Assay

Image 2. Proximity Ligation Analysis of protein-protein interactions between IL1A and IL1R2. HeLa cells were stained with anti-IL1A rabbit purified polyclonal 1:1200 and anti-IL1R2 mouse monoclonal antibody 1:50. Each red dot represents the detection of protein-protein interaction complex, and nuclei were counterstained with DAPI (blue).



Western Blotting

Image 3. Western Blot detection against Immunogen (36.74 kDa) .