

Datasheet for ABIN521670  
**anti-CXCR4 antibody (AA 1-352)**



[Go to Product page](#)

2 Images

## Overview

Quantity:	100 µg
Target:	CXCR4
Binding Specificity:	AA 1-352
Reactivity:	Human
Host:	Rabbit
Clonality:	Polyclonal
Conjugate:	This CXCR4 antibody is un-conjugated
Application:	Western Blotting (WB)

## Product Details

Purpose:	Rabbit polyclonal antibody raised against a full-length human CXCR4 protein.
Immunogen:	CXCR4 (AAH20968.1, 1 a.a. ~ 352 a.a) full-length human protein.
Sequence:	MEGISIYTSN NYTEEMGSGD YDSMKEPCFR EENANFNKIF LPTIYSIIFL TGIVGNGLVI LVMGYQKKLR SMTDKYRLHL SVADLLFVIT LPFWAVDAVA NWFYFGNFLCK AVHVIYTVNL YSSVLILAFI SLDRYLAIVH ATNSQRPRKL LAEKVVYVGV WIPALLLTIP DFIFANVSEA DDRYICDRFY PNDLWVVVFQ FQHIMVGLIL PGIVILSCYC IISKLSHSK GHQKRKALKT TVILILAFFA CWLPYYIGIS IDSFILLEII KQGCEFENTV HKWISITEAL AFFHCCLNPI LYAFLGAKFK TSAQHALLTSV SRGSSLKILS KGKRGGHSSV STESESSSFH SS
Cross-Reactivity:	Human
Characteristics:	Antibody reactive against mammalian transfected lysate.

## Target Details

Target:	CXCR4
Alternative Name:	CXCR4 ( <a href="#">CXCR4 Products</a> )
Background:	Full Gene Name: chemokine (C-X-C motif) receptor 4 Synonyms: CD184,D2S201E,FB22,HM89,HSY3RR,LAP3,LCR1,LESTR,NPY3R,NPYR,NPYRL,NPYY3R,WHIM
Gene ID:	7852
NCBI Accession:	<a href="#">NM_003467</a>
Pathways:	<a href="#">Regulation of Cell Size, CXCR4-mediated Signaling Events</a>

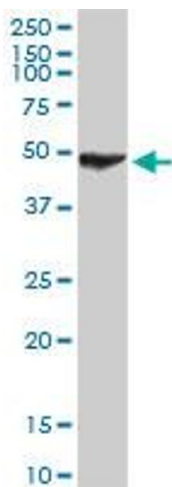
## Application Details

Application Notes:	Optimal working dilution should be determined by the investigator.
Restrictions:	For Research Use only

## Handling

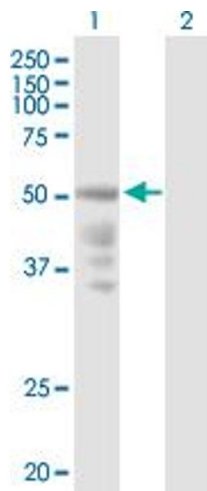
Buffer:	In 1x PBS, pH 7.4
Handling Advice:	Aliquot to avoid repeated freezing and thawing.
Storage:	-20 °C
Storage Comment:	Store at -20°C or lower. Aliquot to avoid repeated freezing and thawing.

## Images



### Western Blotting

**Image 1.** CXCR4 MaxPab rabbit polyclonal antibody.  
Western Blot analysis of CXCR4 expression in human liver.



### Western Blotting

**Image 2.** Western Blot analysis of CXCR4 expression in transfected 293T cell line by CXCR4 MaxPab polyclonal antibody.

Lane 1: CXCR4 transfected lysate(39.70 kDa).

Lane 2: Non-transfected lysate.