

Datasheet for ABIN521723
anti-PSCA antibody (AA 1-123)[Go to Product page](#)

1 Image

Overview

Quantity:	100 µg
Target:	PSCA
Binding Specificity:	AA 1-123
Reactivity:	Human
Host:	Rabbit
Clonality:	Polyclonal
Conjugate:	This PSCA antibody is un-conjugated
Application:	Western Blotting (WB)

Product Details

Purpose:	Rabbit polyclonal antibody raised against a full-length human PSCA protein.
Immunogen:	PSCA (NP_005663.1, 1 a.a. ~ 123 a.a) full-length human protein.
Sequence:	MKAVLLALLM AGLALQPGTA LLCYSCKAQV SNEDCLQVEN CTQLGECQWT ARIRAVGLLT VISKGCSLNC VDDSQDYVVG KKNITCCDTD LCNASGAHAL QPAAAILALL PALGLLLWGP GQL
Cross-Reactivity:	Human
Characteristics:	Antibody reactive against mammalian transfected lysate.

Target Details

Target:	PSCA
Alternative Name:	PSCA (PSCA Products)

Target Details

Background: Full Gene Name: prostate stem cell antigen
Synonyms: PRO232

Gene ID: 8000

NCBI Accession: [NM_005672](#)

Application Details

Application Notes: Optimal working dilution should be determined by the investigator.

Restrictions: For Research Use only

Handling

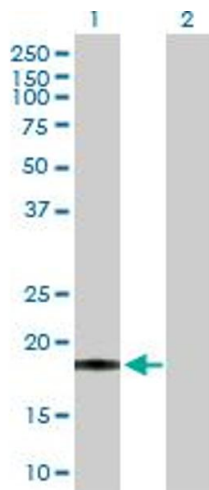
Buffer: In 1x PBS, pH 7.4

Handling Advice: Aliquot to avoid repeated freezing and thawing.

Storage: -20 °C

Storage Comment: Store at -20°C or lower. Aliquot to avoid repeated freezing and thawing.

Images



Western Blotting

Image 1. Western Blot analysis of PSCA expression in transfected 293T cell line by PSCA MaxPab polyclonal antibody.

Lane 1: PSCA transfected lysate(12.90 kDa).

Lane 2: Non-transfected lysate.