

Datasheet for ABIN521747
anti-FGF23 antibody (AA 1-251)

2 Images

[Go to Product page](#)

Overview

Quantity:	50 µg
Target:	FGF23
Binding Specificity:	AA 1-251
Reactivity:	Human
Host:	Mouse
Clonality:	Polyclonal
Conjugate:	This FGF23 antibody is un-conjugated
Application:	Western Blotting (WB), Proximity Ligation Assay (PLA)

Product Details

Purpose:	Mouse polyclonal antibody raised against a full-length human FGF23 protein.
Immunogen:	FGF23 (NP_065689.1, 1 a.a. ~ 251 a.a) full-length human protein.
Sequence:	MLGARLRLWV CALCSVCSMS VLRAYPNASP LLGSSWGGLI HLYTATARNS YHLQIHKNGH VDGAPHQTIY SALMIRSEDA GFVVITGVMS RRYLCMDFRG NIFGSHYFDP ENCRFQHQTL ENGYDVYHSP QYHFLVSLGR AKRAFLPGMN PPPYSQFLSR RNEIPLIHFN TPIPRRHTRS AEDDSERDPL NVLKPRARMT PAPASCSQEL PSAEDNSPMA SDPLGVVRGG RVNTHAGGTG PEGCRPFAKF I
Cross-Reactivity:	Human
Characteristics:	Antibody reactive against mammalian transfected lysate.

Target Details

Target:	FGF23
Alternative Name:	FGF23 (FGF23 Products)
Background:	Full Gene Name: fibroblast growth factor 23 Synonyms: ADHR,HPDR2,HYPF,PHPTC
Gene ID:	8074
NCBI Accession:	NM_020638
Pathways:	RTK Signaling , Fc-epsilon Receptor Signaling Pathway , EGFR Signaling Pathway , Neurotrophin Signaling Pathway , Negative Regulation of Hormone Secretion

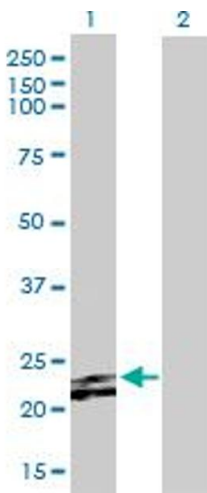
Application Details

Application Notes:	Optimal working dilution should be determined by the investigator.
Restrictions:	For Research Use only

Handling

Buffer:	In 1x PBS, pH 7.4
Handling Advice:	Aliquot to avoid repeated freezing and thawing.
Storage:	-20 °C
Storage Comment:	Store at -20°C or lower. Aliquot to avoid repeated freezing and thawing.

Images

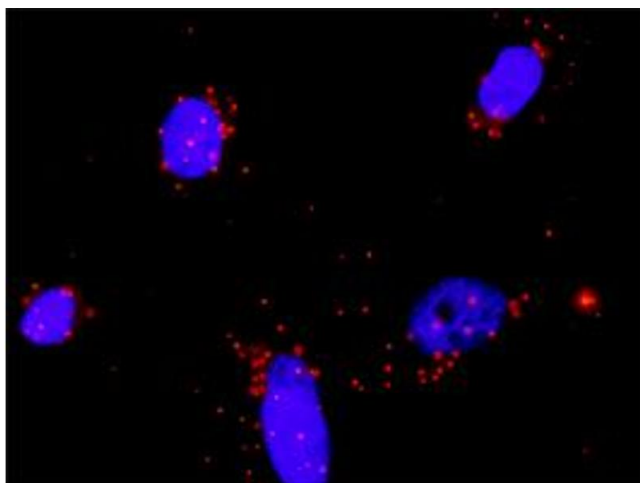


Western Blotting

Image 1. Western Blot analysis of FGF23 expression in transfected 293T cell line by FGF23 MaxPab polyclonal antibody.

Lane 1: FGF23 transfected lysate(27.61 KDa).

Lane 2: Non-transfected lysate.



Proximity Ligation Assay

Image 2. Proximity Ligation Analysis of protein-protein interactions between FGFR2 and FGF23. HeLa cells were stained with anti-FGFR2 rabbit purified polyclonal 1:1200 and anti-FGF23 mouse purified polyclonal antibody 1:50. Each red dot represents the detection of protein-protein interaction complex, and nuclei were counterstained with DAPI (blue).