



[Go to Product page](#)

Datasheet for ABIN521765
anti-ALX1 antibody (AA 198-306)

4 Images

Overview

Quantity:	100 µg
Target:	ALX1
Binding Specificity:	AA 198-306
Reactivity:	Human
Host:	Mouse
Clonality:	Monoclonal
Conjugate:	This ALX1 antibody is un-conjugated
Application:	ELISA, Western Blotting (WB), Immunofluorescence (IF)

Product Details

Purpose:	Mouse monoclonal antibody raised against a partial recombinant CART1.
Immunogen:	CART1 (NP_008913, 198 a.a. ~ 306 a.a) partial recombinant protein with GST tag. MW of the GST tag alone is 26 KDa.
Sequence:	QAKSHFAATY DISVLPRTDS YPQIQNNLWA GNASGGSVVT SCMLPRDTSS CMTPYSHSPR TDSSYTGFSN HQNQFSHVPL NNFFTDLLT GATNGHAFET KPEFERRSS
Clone:	2A10
Isotype:	IgG2a
Cross-Reactivity:	Human
Characteristics:	Antibody Reactive Against Recombinant Protein.

Target Details

Target:	ALX1
Alternative Name:	ALX1 (ALX1 Products)
Background:	Full Gene Name: ALX homeobox 1 Synonyms: CART1
Gene ID:	8092
NCBI Accession:	NM_006982
Pathways:	Tube Formation

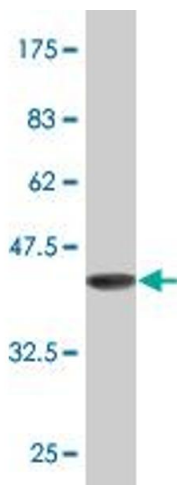
Application Details

Application Notes:	Optimal working dilution should be determined by the investigator.
Restrictions:	For Research Use only

Handling

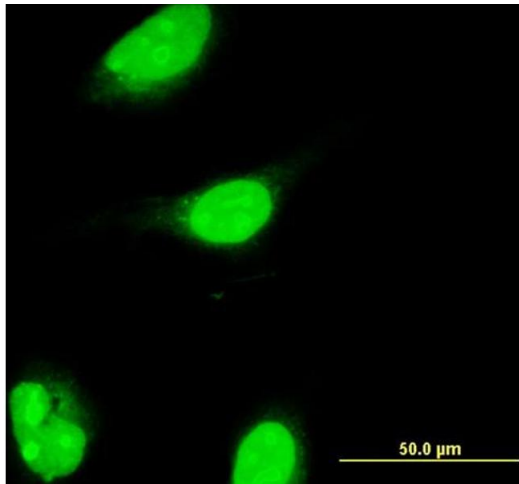
Buffer:	In 1x PBS, pH 7.4
Handling Advice:	Aliquot to avoid repeated freezing and thawing.
Storage:	-20 °C
Storage Comment:	Store at -20°C or lower. Aliquot to avoid repeated freezing and thawing.

Images



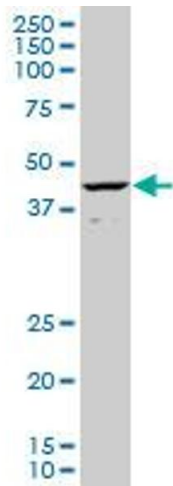
Western Blotting

Image 1. Western Blot detection against Immunogen (37.73 KDa) .



Immunofluorescence

Image 2. Immunofluorescence of monoclonal antibody to ALX1 on HeLa cell. [antibody concentration 10 ug/ml]



Western Blotting

Image 3. CART1 monoclonal antibody (M02), clone 2A10. Western Blot analysis of CART1 expression in HeLa S3 NE .

Please check the [product details page](#) for more images. Overall 4 images are available for ABIN521765.