



[Go to Product page](#)

Datasheet for ABIN521772
anti-TCL1A antibody (AA 61-114)

3 Images

Overview

Quantity:	100 µg
Target:	TCL1A
Binding Specificity:	AA 61-114
Reactivity:	Human
Host:	Mouse
Clonality:	Monoclonal
Conjugate:	This TCL1A antibody is un-conjugated
Application:	Western Blotting (WB), ELISA, Immunofluorescence (IF)

Product Details

Purpose:	Mouse monoclonal antibody raised against a partial recombinant TCL1A.
Immunogen:	TCL1A (NP_068801.1, 61 a.a. ~ 114 a.a) partial recombinant protein with GST tag. MW of the GST tag alone is 26 KDa.
Sequence:	PMTPTQIGPS LLPIMWQLYP DGRYRSSDSS FWRLVYHIKI DGVEDMLLEL LPDD
Clone:	1C4
Isotype:	IgG2b
Cross-Reactivity:	Human
Characteristics:	Antibody Reactive Against Recombinant Protein.

Target Details

Target:	TCL1A
Alternative Name:	TCL1A (TCL1A Products)
Background:	Full Gene Name: T-cell leukemia/lymphoma 1A Synonyms: TCL1
Gene ID:	8115
NCBI Accession:	NM_021966
Pathways:	Stem Cell Maintenance

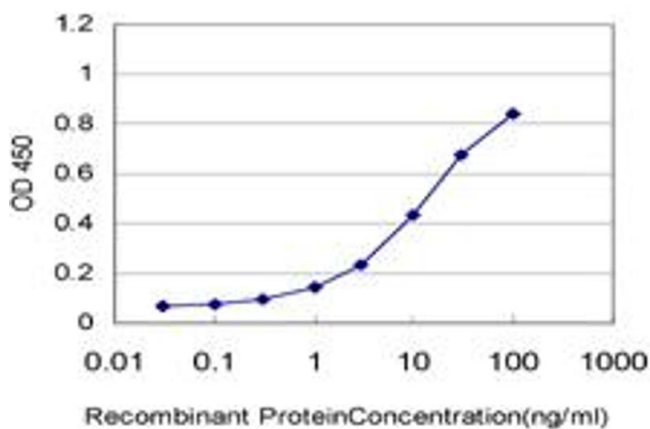
Application Details

Application Notes:	Optimal working dilution should be determined by the investigator.
Restrictions:	For Research Use only

Handling

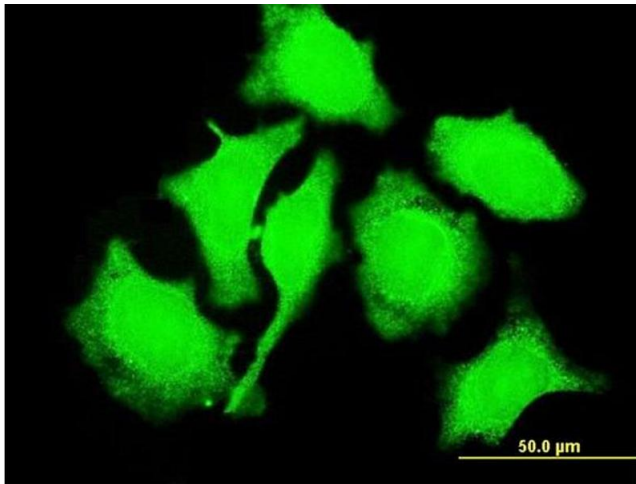
Buffer:	In 1x PBS, pH 7.4
Handling Advice:	Aliquot to avoid repeated freezing and thawing.
Storage:	-20 °C
Storage Comment:	Store at -20°C or lower. Aliquot to avoid repeated freezing and thawing.

Images



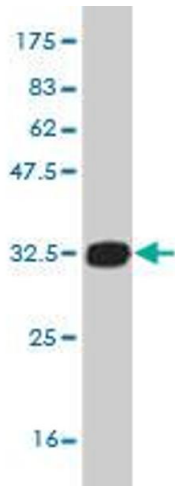
ELISA

Image 1. Detection limit for recombinant GST tagged TCL1A is approximately 0.3ng/ml as a capture antibody.



Immunofluorescence

Image 2. Immunofluorescence of monoclonal antibody to TCL1A on HeLa cell. [antibody concentration 10 ug/ml]



Western Blotting

Image 3. Western Blot detection against Immunogen (31.68 KDa) .