



[Go to Product page](#)

Datasheet for ABIN521773  
**anti-TCL1A antibody (AA 61-114)**

3 Images

Overview

Quantity:	100 µg
Target:	TCL1A
Binding Specificity:	AA 61-114
Reactivity:	Human
Host:	Mouse
Clonality:	Monoclonal
Conjugate:	This TCL1A antibody is un-conjugated
Application:	Western Blotting (WB), ELISA

Product Details

Purpose:	Mouse monoclonal antibody raised against a partial recombinant TCL1A.
Immunogen:	TCL1A (NP_068801.1, 61 a.a. ~ 114 a.a) partial recombinant protein with GST tag. MW of the GST tag alone is 26 KDa.
Sequence:	PMTPTQIGPS LLPIMWQLYP DGRYRSSDSS FWRLVYHIKI DGVEDMELLE LPDD
Clone:	3G10
Isotype:	IgG1
Cross-Reactivity:	Human
Characteristics:	Antibody Reactive Against Recombinant Protein.

## Target Details

Target:	TCL1A
Alternative Name:	TCL1A ( <a href="#">TCL1A Products</a> )
Background:	Full Gene Name: T-cell leukemia/lymphoma 1A Synonyms: TCL1
Gene ID:	8115
NCBI Accession:	<a href="#">NM_021966</a>
Pathways:	<a href="#">Stem Cell Maintenance</a>

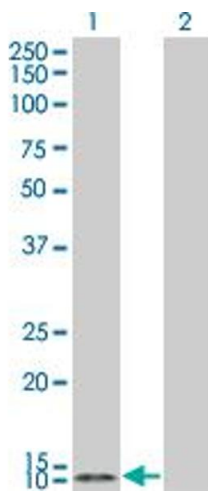
## Application Details

Application Notes:	Optimal working dilution should be determined by the investigator.
Restrictions:	For Research Use only

## Handling

Buffer:	In 1x PBS, pH 7.4
Handling Advice:	Aliquot to avoid repeated freezing and thawing.
Storage:	-20 °C
Storage Comment:	Store at -20°C or lower. Aliquot to avoid repeated freezing and thawing.

## Images

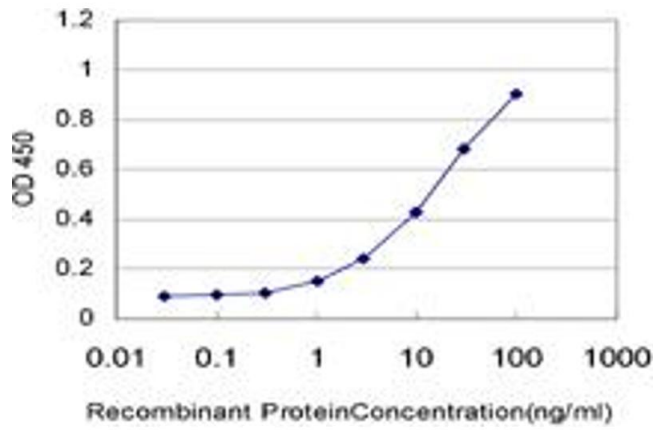


### Western Blotting

**Image 1.** Western Blot analysis of TCL1A expression in transfected 293T cell line by TCL1A monoclonal antibody (M07), clone 3G10.

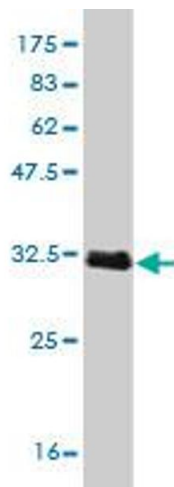
Lane 1: TCL1A transfected lysate(13.5 kDa).

Lane 2: Non-transfected lysate.



### ELISA

**Image 2.** Detection limit for recombinant GST tagged TCL1A is approximately 1ng/ml as a capture antibody.



### Western Blotting

**Image 3.** Western Blot detection against Immunogen (31.68 KDa).