



Datasheet for ABIN521804
anti-C21orf33 antibody (AA 188-268)



[Go to Product page](#)

3 Images

Overview

Quantity:	50 µL
Target:	C21orf33
Binding Specificity:	AA 188-268
Reactivity:	Human
Host:	Mouse
Clonality:	Polyclonal
Conjugate:	This C21orf33 antibody is un-conjugated
Application:	Western Blotting (WB), ELISA

Product Details

Purpose:	Mouse polyclonal antibody raised against a partial recombinant C21orf33.
Immunogen:	C21orf33 (NP_004640, 188 a.a. ~ 268 a.a) partial recombinant protein with GST tag.
Sequence:	RGVEVTVGHE QEEGGKWPYA GTAEAIKALG AKHCVKEVVE AHVDQKNKVV TTPAFMCETA LHYIHDGIGA MVRKVLLELTG K
Cross-Reactivity:	Human, Mouse
Characteristics:	Antibody Reactive Against Recombinant Protein.

Target Details

Target:	C21orf33
Alternative Name:	C21orf33 (C21orf33 Products)

Target Details

Background:	Full Gene Name: chromosome 21 open reading frame 33 Synonyms: D21S2048E,ES1,GT335,HES1,KNP-I,KNPH,KNPI
Gene ID:	8209
NCBI Accession:	NM_004649

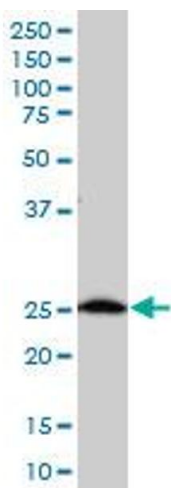
Application Details

Application Notes:	Optimal working dilution should be determined by the investigator.
Restrictions:	For Research Use only

Handling

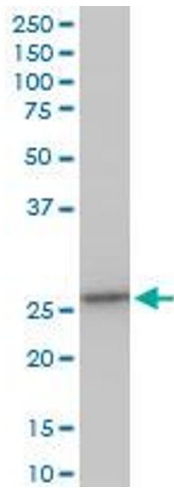
Format:	Liquid
Buffer:	50 % glycerol
Handling Advice:	Aliquot to avoid repeated freezing and thawing.
Storage:	-20 °C
Storage Comment:	Store at -20°C or lower. Aliquot to avoid repeated freezing and thawing.

Images



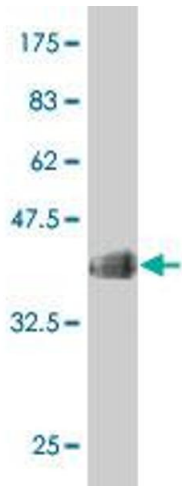
Western Blotting

Image 1. C21orf33 polyclonal antibody (A01), Lot # 060717JCS1 Western Blot analysis of C21orf33 expression in K-562 .



Western Blotting

Image 2. C21orf33 polyclonal antibody (A01), Lot # 060717JCS1. Western Blot analysis of C21orf33 expression in Raw 264.7.



Western Blotting

Image 3. Western Blot detection against Immunogen (35.02 kDa).