



[Go to Product page](#)

Datasheet for ABIN521825  
**anti-RBM10 antibody (AA 123-230)**

2 Images

Overview

Quantity:	100 µg
Target:	RBM10
Binding Specificity:	AA 123-230
Reactivity:	Human
Host:	Mouse
Clonality:	Monoclonal
Conjugate:	This RBM10 antibody is un-conjugated
Application:	Western Blotting (WB), ELISA

Product Details

Purpose:	Mouse monoclonal antibody raised against a partial recombinant RBM10.
Immunogen:	RBM10 (NP_690595.1, 123 a.a. ~ 230 a.a) partial recombinant protein with GST tag. MW of the GST tag alone is 26 KDa.
Sequence:	QKVSMDHSDP KPKINEDWLC NKCGVQNFKR REKCFKCGVP KSEAEQKLPL GTRLDQQTLP LGGRELSQGL LPLPQPYQAQ GVLASQALSQ GSEPSSSEAN DTIILRNL
Clone:	2F12
Isotype:	IgG1
Cross-Reactivity:	Human
Characteristics:	Antibody Reactive Against Recombinant Protein.

## Target Details

Target:	RBM10
Alternative Name:	RBM10 ( <a href="#">RBM10 Products</a> )
Background:	Full Gene Name: RNA binding motif protein 10 Synonyms: DXS8237E,GPATC9,GPATCH9,KIAA0122,MGC1132,MGC997,ZRANB5
Gene ID:	8241
NCBI Accession:	<a href="#">NM_152856</a>

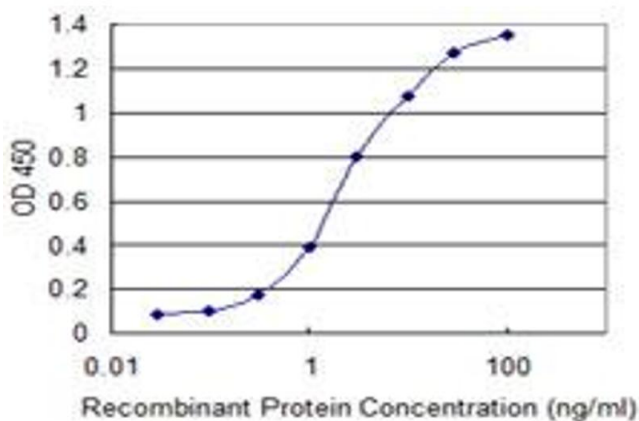
## Application Details

Application Notes:	Optimal working dilution should be determined by the investigator.
Restrictions:	For Research Use only

## Handling

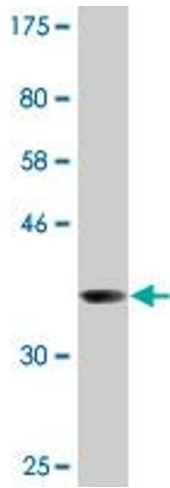
Buffer:	In 1x PBS, pH 7.4
Handling Advice:	Aliquot to avoid repeated freezing and thawing.
Storage:	-20 °C
Storage Comment:	Store at -20°C or lower. Aliquot to avoid repeated freezing and thawing.

## Images



### ELISA

**Image 1.** Detection limit for recombinant GST tagged RBM10 is 0.1 ng/ml as a capture antibody.



### Western Blotting

**Image 2.** Western Blot detection against Immunogen (37.62 kDa).