

Datasheet for ABIN521878
anti-SRPX antibody (AA 1-464)



[Go to Product page](#)

2 Images

Overview

| | |
|----------------------|-------------------------------------|
| Quantity: | 50 µg |
| Target: | SRPX |
| Binding Specificity: | AA 1-464 |
| Reactivity: | Human |
| Host: | Mouse |
| Clonality: | Polyclonal |
| Conjugate: | This SRPX antibody is un-conjugated |
| Application: | Western Blotting (WB) |

Product Details

| | |
|-------------------|--|
| Purpose: | Mouse polyclonal antibody raised against a full-length human SRPX protein. |
| Immunogen: | SRPX (NP_006298.1, 1 a.a. ~ 464 a.a) full-length human protein. |
| Sequence: | MGSPAHRPAL LLLLPLLLL LLLRVPPSRS FPGSGDSPLE DDEVGYSHPR YKDPWCSP KVKYGDVYCR APQGGYYKTA LGTRCDIRCQ KGYELHGSSL LICQSNKRWS DKVICKQKRC PTLAMPANGG FKCVDGAYFN SRCEYYCSPG YTLKGERTVT CMDNKAWSGR PASCVDMEPP RIKCPVVKER IAEPNKLTVR VSWETPEGRD TADGILTDVI LKGLPPGSNF PEGDHKIQYT VYDRAENKGT CKFRVKVRVK RCGKLNAPEN GYMKCSSDGD NYGATCEFSC IGGYELQGSP ARVCQSNLAW SGTEPTCAAM NVNVGVRTAA ALLDQFYEKR RLLIVSTPTA RNLLYRLQLG MLQQAQCGLD LRHITVVELV GVFP TLIGRI GAKIMPPALA LQLRLLLRIIP LYSFSMVLVD KHGMDKERYV SLVMPVALFN LIDTFPLRKE EMVLQAEMSQ TCNT |
| Cross-Reactivity: | Human |

Product Details

Characteristics: Antibody reactive against mammalian transfected lysate.

Target Details

Target: SRPX

Alternative Name: SRPX (SRPX Products)

Background: Full Gene Name: sushi-repeat-containing protein, X-linked
Synonyms: DRS,ETX1,SRPX1

Gene ID: 8406

NCBI Accession: [NM_006307](#)

Application Details

Application Notes: Optimal working dilution should be determined by the investigator.

Restrictions: For Research Use only

Handling

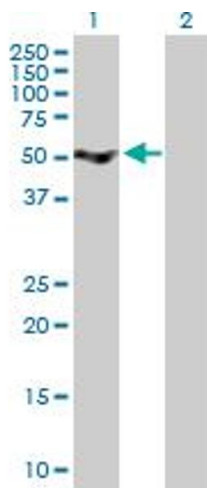
Buffer: In 1x PBS, pH 7.4

Handling Advice: Aliquot to avoid repeated freezing and thawing.

Storage: -20 °C

Storage Comment: Store at -20°C or lower. Aliquot to avoid repeated freezing and thawing.

Images

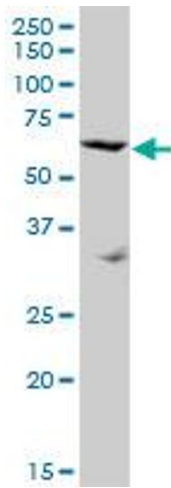


Western Blotting

Image 1. Western Blot analysis of SRPX expression in transfected 293T cell line by SRPX MaxPab polyclonal antibody.

Lane 1: SRPX transfected lysate(51.04 KDa).

Lane 2: Non-transfected lysate.



Western Blotting

Image 2. SRPX MaxPab polyclonal antibody. Western Blot analysis of SRPX expression in HeLa.