



[Go to Product page](#)

Datasheet for ABIN521944  
**anti-PPFIBP2 antibody (AA 1-100)**

2 Images

Overview

Quantity:	100 µg
Target:	PPFIBP2
Binding Specificity:	AA 1-100
Reactivity:	Human
Host:	Mouse
Clonality:	Monoclonal
Conjugate:	This PPFIBP2 antibody is un-conjugated
Application:	ELISA, Western Blotting (WB)

Product Details

Purpose:	Mouse monoclonal antibody raised against a partial recombinant PPFIBP2.
Immunogen:	PPFIBP2 (NP_003612, 1 a.a. ~ 100 a.a) partial recombinant protein with GST tag. MW of the GST tag alone is 26 KDa.
Sequence:	MASDASHALE AALEQMDGII AGTKTGADLS DGTCEPLAS PASYMNPPFV LHLIEDLRLA LEMLELPQER AALLSQIPGP TAAAIKEWFE ESLSQVNHHS
Clone:	1B3
Isotype:	IgG1
Cross-Reactivity:	Human
Characteristics:	Antibody Reactive Against Recombinant Protein.

## Target Details

Target:	PPFIBP2
Alternative Name:	PPFIBP2 ( <a href="#">PPFIBP2 Products</a> )
Background:	Full Gene Name: PTPRF interacting protein, binding protein 2 (Iiprin beta 2) Synonyms: Cclp1,DKFZp781K06126,MGC42541
Gene ID:	8495
NCBI Accession:	<a href="#">NM_003621</a>

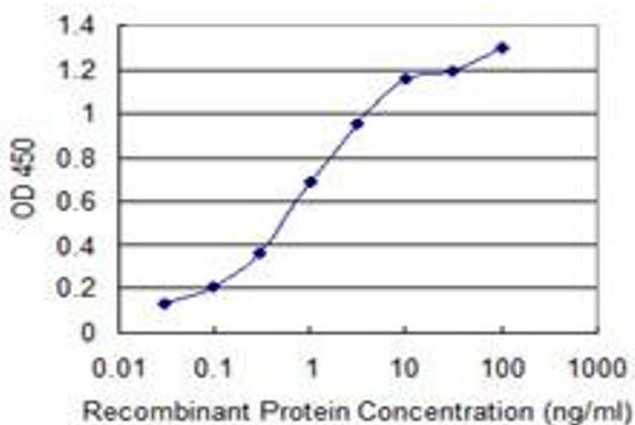
## Application Details

Application Notes:	Optimal working dilution should be determined by the investigator.
Restrictions:	For Research Use only

## Handling

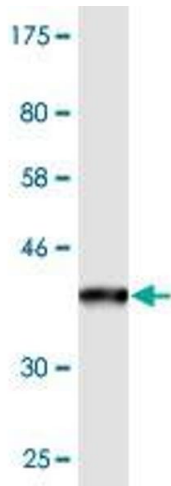
Buffer:	In 1x PBS, pH 7.4
Handling Advice:	Aliquot to avoid repeated freezing and thawing.
Storage:	-20 °C
Storage Comment:	Store at -20°C or lower. Aliquot to avoid repeated freezing and thawing.

## Images



### ELISA

**Image 1.** Detection limit for recombinant GST tagged PPFIBP2 is 0.03 ng/ml as a capture antibody.



### Western Blotting

**Image 2.** Western Blot detection against Immunogen (36.74 kDa).