



[Go to Product page](#)

Datasheet for ABIN521955
anti-MMP23B antibody (AA 241-340)

1 Image

Overview

Quantity:	100 µg
Target:	MMP23B
Binding Specificity:	AA 241-340
Reactivity:	Human
Host:	Mouse
Clonality:	Monoclonal
Conjugate:	This MMP23B antibody is un-conjugated
Application:	ELISA

Product Details

Purpose:	Mouse monoclonal antibody raised against a partial recombinant MMP23B.
Immunogen:	MMP23B (NP_008914, 241 a.a. ~ 340 a.a) partial recombinant protein with GST tag. MW of the GST tag alone is 26 KDa.
Sequence:	LSQDELWGLH RLYGCLDRLF VCASWARRGF CDARRRLMKR LCPSSCDFCY EFPFPTVATT PPPPRTKTRL VPEGRNVTFR CGQKILHKKG KVVYWKDQEP
Clone:	1D8
Isotype:	IgG2a
Cross-Reactivity:	Human
Characteristics:	Antibody Reactive Against Recombinant Protein.

Target Details

Target:	MMP23B
Alternative Name:	MMP23B (MMP23B Products)
Background:	Full Gene Name: matrix metalloproteinase 23B Synonyms: MIFR,MIFR-1,MMP22
Gene ID:	8510
NCBI Accession:	NM_006983

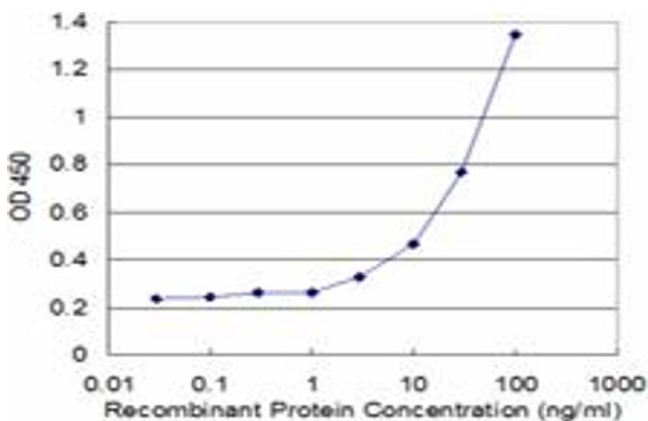
Application Details

Application Notes:	Optimal working dilution should be determined by the investigator.
Restrictions:	For Research Use only

Handling

Buffer:	In 1x PBS, pH 7.4
Handling Advice:	Aliquot to avoid repeated freezing and thawing.
Storage:	-20 °C
Storage Comment:	Store at -20°C or lower. Aliquot to avoid repeated freezing and thawing.

Images



ELISA

Image 1. Detection limit for recombinant GST tagged MMP23B is approximately 3ng/ml as a capture antibody.