



[Go to Product page](#)

Datasheet for ABIN521956
anti-LIPF antibody (AA 299-398)

2 Images

Overview

Quantity:	100 µg
Target:	LIPF
Binding Specificity:	AA 299-398
Reactivity:	Human
Host:	Mouse
Clonality:	Monoclonal
Conjugate:	This LIPF antibody is un-conjugated
Application:	Western Blotting (WB), ELISA

Product Details

Purpose:	Mouse monoclonal antibody raised against a partial recombinant LIPF.
Immunogen:	LIPF (NP_004181, 299 a.a. ~ 398 a.a) partial recombinant protein with GST tag. MW of the GST tag alone is 26 KDa.
Sequence:	KSGKFQAYDW GSPVQNRMHY DQSQPPYYNV TAMNVPIAVW NGGKDLLADP QDVGLLLPKL PNLIYHKEIP FYNHLDFIWA MDAPQEVYND IVSMISEDKK
Clone:	3B3
Isotype:	IgG1
Cross-Reactivity:	Human
Characteristics:	Antibody Reactive Against Recombinant Protein.

Target Details

Target:	LIPF
Alternative Name:	LIPF (LIPF Products)
Background:	Full Gene Name: lipase, gastric Synonyms: GL,HGL,HLAL,MGC138477,MGC142271
Gene ID:	8513
NCBI Accession:	NM_004190

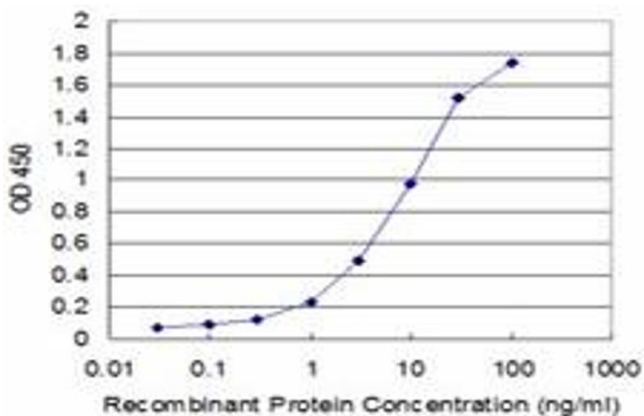
Application Details

Application Notes:	Optimal working dilution should be determined by the investigator.
Restrictions:	For Research Use only

Handling

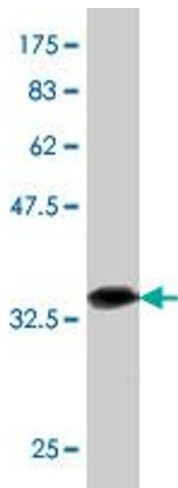
Buffer:	In 1x PBS, pH 7.4
Handling Advice:	Aliquot to avoid repeated freezing and thawing.
Storage:	-20 °C
Storage Comment:	Store at -20°C or lower. Aliquot to avoid repeated freezing and thawing.

Images



ELISA

Image 1. Detection limit for recombinant GST tagged LIPF is approximately 0.1 ng/ml as a capture antibody.



Western Blotting

Image 2. Western Blot detection against Immunogen (36.74 kDa).