

Datasheet for ABIN521976
anti-CSDA antibody (AA 1-372)



[Go to Product page](#)

4 Images

Overview

Quantity:	100 µL
Target:	CSDA
Binding Specificity:	AA 1-372
Reactivity:	Human
Host:	Rabbit
Clonality:	Polyclonal
Conjugate:	This CSDA antibody is un-conjugated
Application:	Western Blotting (WB), Immunoprecipitation (IP)

Product Details

Purpose:	Rabbit polyclonal antibody raised against a full-length human CSDA protein.
Immunogen:	CSDA (AAH15564.1, 1 a.a. ~ 372 a.a) full-length human protein.
Sequence:	MSEAGEATTT TTTTLPQAPT EAAAAAPQDP APKSPVGSGA PQAAAPAPAA HVAGNPGGDA APAATGTAAA ASLATAAGSE DAEKKVLATK VLGTVKWFNV RNGYGFNINR DTKEDVVFHQ TAIKKNNPRK YLRVSGDGET VEFDVVEGEK GAEAAANTGP DGVPVEGSRV AADRRRYRRG YYGRRRGPPR NYAGEEEEEEG SGSSEGFDPD ATDRQFSGAR NQLRRPQYRP QYRQRRFPPY HVGQTFDRRS RVLPHPNRIQ AGEIGEMKDG VPEGAQLQGP VHRNPTYRPR YRSRGPPRPR PAPA VGEAED KENQQATSGP NQPSVRRGYR RPYNYRRRPR PPNAPSQD GK EAKAGEAPTE NPAPPTQSS AE
Cross-Reactivity:	Human
Characteristics:	Antibody reactive against mammalian transfected lysate.

Target Details

Target:	CSDA
Alternative Name:	CSDA (CSDA Products)
Background:	Full Gene Name: cold shock domain protein A Synonyms: CSDA1,DBPA,ZONAB
Gene ID:	8531
Pathways:	Negative Regulation of intrinsic apoptotic Signaling

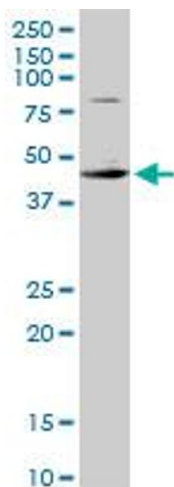
Application Details

Application Notes:	Optimal working dilution should be determined by the investigator.
Restrictions:	For Research Use only

Handling

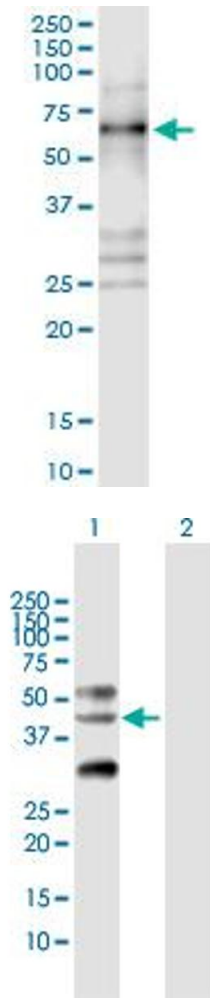
Format:	Liquid
Buffer:	No additive
Preservative:	Without preservative
Handling Advice:	Aliquot to avoid repeated freezing and thawing.
Storage:	-20 °C
Storage Comment:	Store at -20°C or lower. Aliquot to avoid repeated freezing and thawing.

Images



Western Blotting

Image 1. CSDA MaxPab rabbit polyclonal antibody. Western Blot analysis of CSDA expression in HeLa.



Immunoprecipitation

Image 2. Immunoprecipitation of CSDA transfected lysate using anti-CSDA MaxPab rabbit polyclonal antibody and Protein A Magnetic Bead , and immunoblotted with CSDA MaxPab mouse polyclonal antibody (B01) .

Western Blotting

Image 3. Western Blot analysis of CSDA expression in transfected 293T cell line by CSDA MaxPab polyclonal antibody.

Lane 1: CSDA transfected lysate(40.1 KDa).

Lane 2: Non-transfected lysate.

Please check the [product details page](#) for more images. Overall 4 images are available for ABIN521976.