



Datasheet for ABIN521978  
**anti-CSDA antibody (AA 241-330)**



[Go to Product page](#)

4 Images

Overview

Quantity:	100 µg
Target:	CSDA
Binding Specificity:	AA 241-330
Reactivity:	Human
Host:	Mouse
Clonality:	Monoclonal
Conjugate:	This CSDA antibody is un-conjugated
Application:	Western Blotting (WB), ELISA, Immunofluorescence (IF)

Product Details

Purpose:	Mouse monoclonal antibody raised against a partial recombinant CSDA.
Immunogen:	CSDA (NP_003642, 241 a.a. ~ 330 a.a) partial recombinant protein with GST tag. MW of the GST tag alone is 26 KDa.
Sequence:	HVGQTFDRRS RVLPHPNRIQ AGEIGEMKDG VPEGAQLQGP VHRNPTYRPR YRSRGPPRPR PAPAVGEAED KENQQATSGP NQPSVRRGYR
Clone:	1H5
Isotype:	IgG2a
Cross-Reactivity:	Human
Characteristics:	Antibody Reactive Against Recombinant Protein.

## Target Details

Target:	CSDA
Alternative Name:	CSDA ( <a href="#">CSDA Products</a> )
Background:	Full Gene Name: cold shock domain protein A Synonyms: CSDA1,DBPA,ZONAB
Gene ID:	8531
NCBI Accession:	<a href="#">NM_003651</a>
Pathways:	<a href="#">Negative Regulation of intrinsic apoptotic Signaling</a>

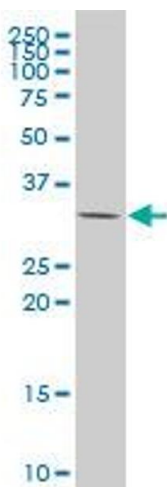
## Application Details

Application Notes:	Optimal working dilution should be determined by the investigator.
Restrictions:	For Research Use only

## Handling

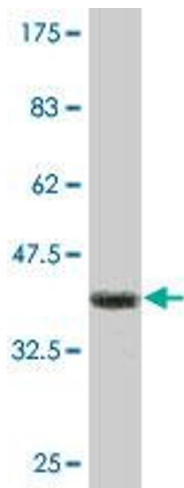
Buffer:	In 1x PBS, pH 7.4
Handling Advice:	Aliquot to avoid repeated freezing and thawing.
Storage:	-20 °C
Storage Comment:	Store at -20°C or lower. Aliquot to avoid repeated freezing and thawing.

## Images



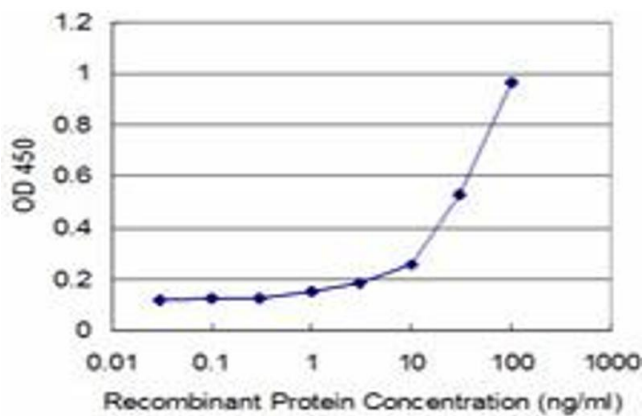
### Western Blotting

**Image 1.** CSDA monoclonal antibody (M06), clone 1H5  
Western Blot analysis of CSDA expression in HeLa .



### Western Blotting

**Image 2.** Western Blot detection against Immunogen (35.64 KDa).



### ELISA

**Image 3.** Detection limit for recombinant GST tagged CSDA is approximately 3ng/ml as a capture antibody.

Please check the [product details page](#) for more images. Overall 4 images are available for ABIN521978.