



[Go to Product page](#)

Datasheet for ABIN522052  
**anti-PRKRA antibody (AA 101-200)**

1 Image

Overview

Quantity:	100 µg
Target:	PRKRA
Binding Specificity:	AA 101-200
Reactivity:	Human
Host:	Mouse
Clonality:	Monoclonal
Conjugate:	This PRKRA antibody is un-conjugated
Application:	ELISA

Product Details

Purpose:	Mouse monoclonal antibody raised against a partial recombinant PRKRA.
Immunogen:	PRKRA (NP_003681, 101 a.a. ~ 200 a.a) partial recombinant protein with GST tag. MW of the GST tag alone is 26 KDa.
Sequence:	ANASICFAVP DPLMPDPSKQ PKNQLNPIGS LQELAIHHGW RLPEYTLSQE GGPAHKREYT TICRLESFME TGKGASKKQA KRNAAEKFLA KFSNISPENH
Clone:	1G12
Isotype:	IgG2a
Cross-Reactivity:	Human, Rat
Characteristics:	Antibody Reactive Against Recombinant Protein.

## Target Details

Target:	PRKRA
Alternative Name:	PRKRA ( <a href="#">PRKRA Products</a> )
Background:	Full Gene Name: protein kinase, interferon-inducible double stranded RNA dependent activator Synonyms: DYT16,HSD14,PACT,RAX
Gene ID:	8575
NCBI Accession:	<a href="#">NM_003690</a>
Pathways:	<a href="#">Regulatory RNA Pathways</a>

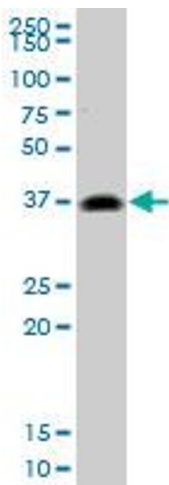
## Application Details

Application Notes:	Optimal working dilution should be determined by the investigator.
Restrictions:	For Research Use only

## Handling

Buffer:	In 1x PBS, pH 7.4
Handling Advice:	Aliquot to avoid repeated freezing and thawing.
Storage:	-20 °C
Storage Comment:	Store at -20°C or lower. Aliquot to avoid repeated freezing and thawing.

## Images



### Western Blotting

**Image 1.** PRKRA monoclonal antibody (M02), clone 1G12.

Western Blot analysis of PRKRA expression in PC-12