

Datasheet for ABIN522098
anti-NUMB antibody (AA 1-135)[Go to Product page](#)

2 Images

Overview

Quantity:	100 µg
Target:	NUMB
Binding Specificity:	AA 1-135
Reactivity:	Human
Host:	Rabbit
Clonality:	Polyclonal
Conjugate:	This NUMB antibody is un-conjugated
Application:	Western Blotting (WB), Proximity Ligation Assay (PLA)

Product Details

Purpose:	Rabbit polyclonal antibody raised against a full-length human NUMB protein.
Immunogen:	NUMB (AAH33824.1, 1 a.a. ~ 135 a.a) full-length human protein.
Sequence:	MPYPAPNVPV VGITPSQMVA NVFGTAGHPQ AAHPHQSPSL VRQQTFFPHYE ASSATTSPFF KPPAQHLNGS AAFNGVDDGR LASADRHTEV PTGTCPVDPF EAQWAALENK SKQRTNPSPT NPFSSDLQKT FEIEL
Cross-Reactivity:	Human
Characteristics:	Antibody reactive against mammalian transfected lysate.

Target Details

Target:	NUMB
---------	------

Target Details

Alternative Name:	NUMB (NUMB Products)
Background:	Full Gene Name: numb homolog (Drosophila) Synonyms: S171
Gene ID:	8650
Pathways:	Cell-Cell Junction Organization

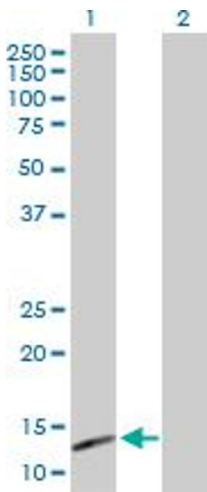
Application Details

Application Notes:	Optimal working dilution should be determined by the investigator.
Restrictions:	For Research Use only

Handling

Buffer:	In 1x PBS, pH 7.4
Handling Advice:	Aliquot to avoid repeated freezing and thawing.
Storage:	-20 °C
Storage Comment:	Store at -20°C or lower. Aliquot to avoid repeated freezing and thawing.

Images

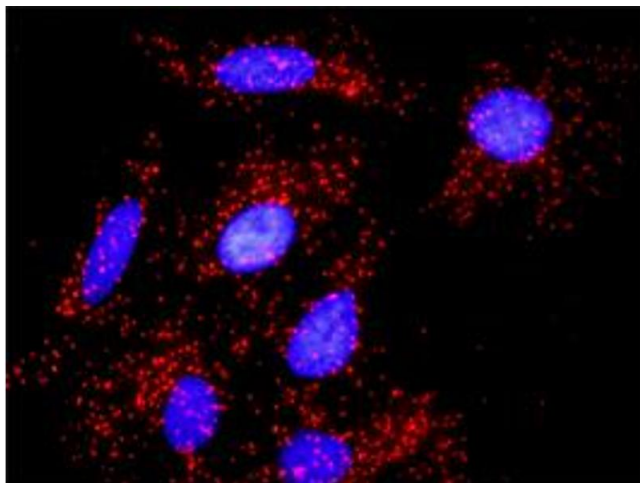


Western Blotting

Image 1. Western Blot analysis of NUMB expression in transfected 293T cell line by NUMB MaxPab polyclonal antibody.

Lane 1: NUMB transfected lysate(14.50 KDa).

Lane 2: Non-transfected lysate.



Proximity Ligation Assay

Image 2. Proximity Ligation Analysis of protein-protein interactions between NUMB and APP. HeLa cells were stained with anti-NUMB rabbit purified polyclonal 1:1200 and anti-APP mouse monoclonal antibody 1:50. Each red dot represents the detection of protein-protein interaction complex, and nuclei were counterstained with DAPI (blue).