

Datasheet for ABIN522135
anti-Keratin 36 antibody (AA 1-417)



[Go to Product page](#)

2 Images

Overview

Quantity:	50 µg
Target:	Keratin 36 (KRT36)
Binding Specificity:	AA 1-417
Reactivity:	Human
Host:	Mouse
Clonality:	Polyclonal
Conjugate:	This Keratin 36 antibody is un-conjugated
Application:	Western Blotting (WB)

Product Details

Purpose:	Mouse polyclonal antibody raised against a full-length human KRT36 protein.
Immunogen:	KRT36 (AAH43581.1, 1 a.a. ~ 417 a.a) full-length human protein.
Sequence:	MLRSGLSGLG SCLPGSYLSS ECHTSGFVGS GGWFCEGSFN GSEKETMQFL NDRLANYLEK VRQLERENAE LESRIQEWYE FQIPYICPDY QSYFKTIEDF QKILLTKSE NARLVLQIDN AKLAADDVRT KYETELSLRQ LVEADINGLR RILDELTLCK ADLEAQVESL KEELMCLKKN HEEEVSVLRC QLGDRLNVEV DAAPPVDLNK ILEDMRCQYE ALVENNRDVE EAWFNTQTEE LNQQVSSSE QLQCCQTEII ELRRTVNALE IELQAQHSMR NSLESTLAET EARYSSQLAQ MQCLISNVEA QLSEIRCDLE RQNQEYQVLL DVKARLEGEI ATYRHILLEGE DCKLPPQPCA TACKPVIRVP SVPPVPCVPS VPCTPAPQVG TQIRTITEEI RDGKVISSRE HVQSRPL
Cross-Reactivity:	Human
Characteristics:	Antibody reactive against mammalian transfected lysate.

Target Details

Target:	Keratin 36 (KRT36)
Alternative Name:	KRT36 (KRT36 Products)
Background:	Full Gene Name: keratin 36 Synonyms: HA6,KRTHA6,hHa6
Gene ID:	8689

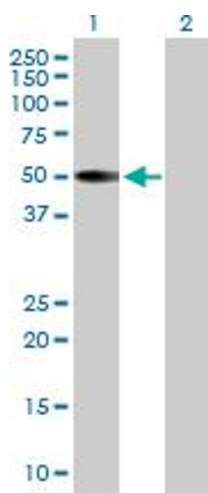
Application Details

Application Notes:	Optimal working dilution should be determined by the investigator.
Restrictions:	For Research Use only

Handling

Buffer:	In 1x PBS, pH 7.4
Handling Advice:	Aliquot to avoid repeated freezing and thawing.
Storage:	-20 °C
Storage Comment:	Store at -20°C or lower. Aliquot to avoid repeated freezing and thawing.

Images

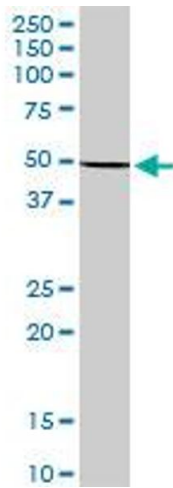


Western Blotting

Image 1. Western Blot analysis of KRT36 expression in transfected 293T cell line by KRT36 MaxPab polyclonal antibody.

Lane 1: KRTHA6 transfected lysate(45.87 kDa).

Lane 2: Non-transfected lysate.



Western Blotting

Image 2. KRT36 MaxPab polyclonal antibody. Western Blot analysis of KRT36 expression in HeLa.